

Rod Craft
CUSTOM ROBBUILDING WORKSHOP

RODBUILDING

JADRAK
KOREA

LURE MAKING

Hayden
fly shop

FLY TYING

DuRi fishing

DURI FISHING

2019-02 RODBUILDING

BEYOND YOUR IMAGINATION



CONTENTS

Reel Seats (03~06)

- Painted Reel Seat - Casting
Fuji ACS16,ECS16,TCS16
- Painted Reel Seat - Spinning
Fuji IPS16,VSS16,DPS16
- Painted Reel Seat - Spinning/Casting
Fuji SK16,TVS16
- No painted Fuji Nut
Fuji DPSM16/ASH, KDPS16
- Painted Reel Seat - Rodcraft
RDHP16, RDEP16, RF16, RF16-BM

Carbon Tube & Arbor(07~08)

- Carbon Tube
PCK,WCK,MCK,GWCK,RWCK,ACK
- Carbon Arbor, Urethan Arbor
- Aluminum Arbor
S-ML,S-MT150

Winding Checks(09~29)

- General Winding Check
W-25R,W-27S,W-27T,W-27,UW-27X
W-B,W-C, W-D,W-F,W-G,W-H,W-CN
- Winding Check for Fuji KDPS16
S-16M,S-16MH,S-16MG,S-16MP,
S-16MR,S-16MSB,S-16ME,S-23R,S-22T
CK22,WCK22-B
- Winding Check for Foregrip(16size)
S-FR,S-FU,S-MR,S-16NUT,S-16FWB
S-16TR
- Lip Stick for 16 Size Reel Seats
S-16TG,S-16FI,S-16TL,S-16NC,S-MP
S-16FH
- Winding Check for Rear Grip
S-16RSA,S-16RSB,S-H,S-W,S-R, WCK27
- Winding Check for SK16 Reel Seat
SK-16RA,SK-16RB,CK25-07,CK25-27
SK-16MK,SK-16MH,SK-16MF,SK-16-MG
SK-16ZL,SK-16M,SK-16SC,SK-16-G
SK-16F130/SK-16C130,SK-16C130
SK-16A,SK-16B,SK-16D,SK-16E,
SK-16CN,SK-16RSR
- Winding Check for TVS16 Reel Seat
TV16-A,TV16-RSR
- Endcap : Aluminum and Rubber
E-27MH,E-27Z,E-27F,E-25K,E-27K,
E-UA,E-27A,WEIGHT BALANCE
E-27ZA,E-29ZA,E-27ZB,SSPE, E-27ZA
E-29ZA,E-27ZB,E-27BR,E-27BS,E-27BW
E-27BK,E-27BT

EVA Grip (30~36)

- Exclusive Usage for Reel Seats(16size)
EA16D,EA16S,EV16D,EV16S,EI16D,
EI16S,ES16D,ES16S,ET16D
- Foregrip for DPSM16/ASH and KDPS16
EG,EK16F
- General Reargrip
EF-XA,EF-XB,EF-XC,EF-XD,EF-XJ,EF-ZJ
EF-XK,EF-ZK,EF-XM
- Grip + Endcap
EE-XA,EE-XB,EE-XC,EE-XD200
- Long & Plain for additional Process
EL-XA, EN26-X450,EN28-X240,
EN28-Z250,EN27-Z450,EN27-Z450
EN28-X450,EN28-Z450
EN28-X450/Camo, EN32-X450/Color
- Wood Root Grip
WAC-16A, WI16D,WV16D,WS16D,
WK16F,WF-AC,WF-AD,WF-AS128

Guide (39~42)

- Top Guides
CRST,FST,LNST,LST,BST,FWT,WLST,WST
- Running Guides
WSG,KBSG,LDBSG
- Single Foot Guides
HSG,SSG
- Double Foot Guides
CRSG,WNSG,KWSG,RBSG
- Braided Line Guides
DBSG,WDBSG
- Fly & Coil Guides
FSG,WGS
- Hook Keeper
WK,CK,ZK,RK

Wrapping Threads (43~44)

- Wrapping Threads Kit
WK-001,WK-002,WK-003,WK-004
WK-005,WK-006,WK-007MWK-008
WK-009
- Wrapping Threads
FY/FC-Color, MC-Color, MT-Color,
MR-Color

Jig System & Cork Ring(45~46)

- Materials
CR32-13,BC32-20, CK32-13,CR32-13,
BL32-13/Color, BT32-13/Color
- Cork Ring Slice/Cutting Jig
CRS45,CRSH,CRS30,VJB
- Tools
CSS, CSS-BL,CCP

T-system(47~50)

- T-System Kit
TMSA,MKA, TDR80,TDR15,THWK
- T-System Parts
TAP15,TAP80,TCN,TCK-A,TVS,TTA,
JSM, TCORD,TLR45

Epoxy Finish&Accessory(51~52)

- Rodbuilding Chemical
RPX-80,RPX-240,EBR60,CFL80,XRCK50
- Small Tools
ST-4,PT-4,RT-01
- Disposable Supplies
RB,DBR,MCP20,ESRG,MST50,MARKER
GDP,DW,SMTAPE,3MTAPE,BMTAPE

REEL SEAT

● Painted Reel Seat - Casting

ACSP16



Fuji ACS16 Painted Casting Reel Seat (Body Only)

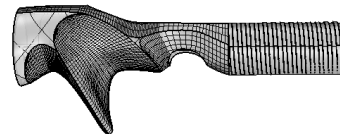
Well-known Fuji reel seat ACS16 is painted with beautiful colors. Painting technique like vaporation and marbling makes reel seats more distinguished. I.D of reel seats ranges from 9.5mm to 15mm.



AURORA (AU)



STONE MARBLE (SM)



GUNSMOKE (GS)



WOOD MARBLE (WM)

MODEL	ID	LENGTH	COLOR	PRICE	REMARKS
ACSP16	9.5mm (0.37")	113mm (4.45")	4 COLORS	U\$ 13~15	Body Only
	10mm (0.39")	113mm (4.45")	4 COLORS	U\$ 13~15	Body Only
	10.5mm (0.41")	113mm (4.45")	4 COLORS	U\$ 13~15	Body Only
	11mm (0.43")	113mm (4.45")	4 COLORS	U\$ 13~15	Body Only
	13mm (0.51")	113mm (4.45")	4 COLORS	U\$ 13~15	Body Only
	15mm (0.59")	113mm (4.45")	4 COLORS	U\$ 13~15	Body Only

ECSP16



Fuji ECS16 Painted Casting Reel Seat (Body Only)

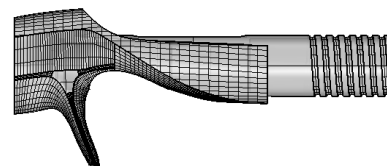
Fuji ECS16 is old reel seats but popular for big hands angler. Simple and practical, it is a essence of casting reel seats. I.D 13mm/15mm, 2 sizes are available.



AURORA (AU)



STONE MARBLE (SM)



GUNSMOKE (GS)



WOOD MARBLE (WM)

MODEL	ID	LENGTH	COLOR	PRICE	REMARKS
ECS16	13mm (0.37")	110.5mm (4.35")	4 COLORS	U\$ 13.00~15.00	Body Only
	15mm (0.39")	110.5mm (4.35")	4 COLORS	U\$ 13.00~15.00	Body Only

TCSP16

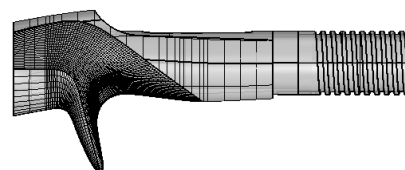


Fuji TCS16 Painted Casting Reel Seat (Body only)

Classic casting reel seats survives vividly due to practical and comfort grip. It is a friend of angler from the starts of pipe reel seats.



STONE MARBLE (SM)



MODEL	ID	LENGTH	COLOR	PRICE	REMARKS
ECS16	15mm (0.59")	114mm	1 COLORS	U\$ 13.00	Body Only

● Painted Reel Seat - Spinning

IPSP16



Fuji IPS16 Painted Spinning Reel Seat (Body only)

Most popular Spinning Reel seats. ID is 15mm one size.



AURORA (AU)



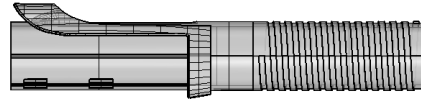
GUNSMOKE (GS)



STONE MARBLE (SM)



WOOD MARBLE (WM)



MODEL	ID	LENGTH	COLOR	PRICE	REMARKS
IPS16	15mm (0.59")	113mm (4.45")	4 COLORS	U\$ 12.00~14.00	Body Only

VSSP16



Fuji VSS16 Painted Spinning Reel Seat (Body Only)

Fuji VSS16 Spinning reel seats is idea for thin and weak blanks. Its ID is 13mm only.

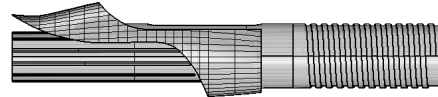
AURORA (AU)



STONE MARBLE (SM)



WOOD MARBLE (WM)



MODEL	ID	LENGTH	COLOR	PRICE	REMARKS
VSSP16	13mm (0.59")	113mm (4.45")	4 COLORS	U\$ 13.00~15.00	Only Body

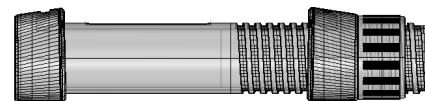
DPSP16



Fuji DPS16 Painted Spinning Reel Seat (Including Nut)

Fuji DPSM Sping Reel Seats is oldest pipe reel seats for Spinning Rods and is popular these days.

WOOD MARBLE (WM)



MODEL	ID	LENGTH	COLOR	PRICE	REMARKS
DPS16	15mm (0.59")	105.5mm	1 COLORS	U\$ 17.00	Body + Nut

● Painted Reel Seat - Spinning / Casting

SK16



Fuji SK16 Painted Spinning/Casting Reel Seat (Parts Optional)

Combination of Fuji SK16 Reel seats makes 4 Spinning/Casting Reel seats. SKSPSN16 should be added to complete one reel seats. All parts are sold in separated.

SKTS16/P **SKSS16/P** **SKSS16/ASH** **KSKSS16/ASH**

AURORA (AU)

STONE MARBLE (SM)

WOOD MARBLE (WM)

SKSPSN - No painting

MODEL	ID	LENGTH	Ice G/S	Aurora	Wood Marble	Stone Marble	PRICE
SKTS16/P	15.5mm	20mm	0	0	0	0	U\$ 10.00~12.00
SKSS16/P	15.5mm	27.7mm	0	0	0	0	U\$ 10.00~12.00
SKSS16/ASH	19.0mm	40.3mm	-	0	0	0	U\$ 12.00~14.00
KSKSS16/ASH	19.0mm	51.7mm	-	0	-	0	U\$ 15.00
SKSPSN16	10.5mm	46.5mm	-	-	-	0	U\$ 3.00

TVSP16



Fuji TVS16 Painted Spinning Reel Seat (Parts Optional)

Fuji TVS16 reel seat is very long spinning Reel seat. Exposed parts which graped on sides make rod sensibility highly. Body and parts are sold seperatly.

TVSS16/ASH **TVSK16/ASH** **LOS16/AN+TVS16/ASH** **LOK16/AN+TVSJ16/ASH**

AURORA (AU)

STONE MARBLE (SM)

WOOD MARBLE (WM)

MODEL	ID	LENGTH	Aurora	Wood Marble	Stone Marble	PRICE
TVS16 - Body Only	15.0mm	127mm	0	0	0	U\$ 13.00~15.00
TVSS16/ASH	19.0mm	45mm	0	0	0	U\$ 8.00~10.00
TVSK16/ASH	19.0mm	56.6mm	0	0	0	U\$ 8.00~10.00
LOS16/AN+TVSJ16/ASH	-	55.4mm	0	0	0	U\$ 12.00~14.00
LOK16/AN+TVSJ16/ASH	-	66.9mm	0	0	0	U\$ 12.00~14.00

DPSM16/ASH



Fuji DPSM16/ASH Nut



MODEL	I.D	O.D	LENGTH	COLOR	PRICE
DPSM16/ASH	18.6mm	21.9mm	25.5mm	3 Colors	U\$ 3.00~4.00

KDPS16



Fuji KDPS16 Quck Lock Nut

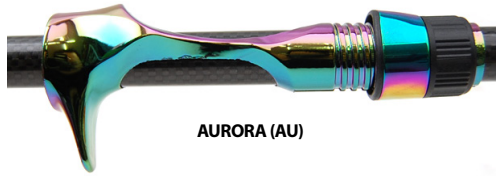


MODEL	I.D	O.D	LENGTH	COLOR	PRICE
KDPS16	19mm	20.3mm	61.5mm	SILAVER	U\$ 5.00

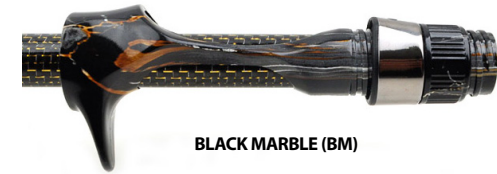
● Rodcraft Casting Reel Seats

RDEP16 RDEP16 Casting Reel Seats (Body only)

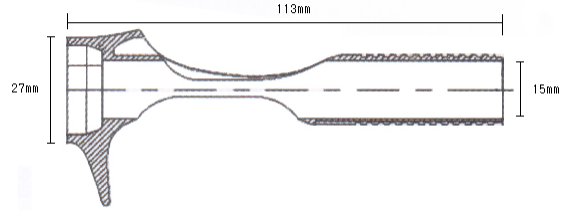
RDEP16 reel seat shows unique design to expose blanks and seems positioned between Fuji SK16 and ECS16 Reel seats.



AURORA (AU)



BLACK MARBLE (BM)



MODEL	ID	LENGTH	COLOR	PRICE	REMARKS
RDEP16	15mm (0.59")	113mm (4.45")	2 COLORS	U\$ 9.00	Only Body

RDHP16 Rodcraft RDHP16 Casting Reel Seats (Nut Included)

RDHP16 reel seat attract some anglers to love grip with double exposed blanks grip. Nut is unique and not to compatible with normal nut



MODEL	ID	LENGTH	COLOR	PRICE	REMARKS
RDHP16	15mm (0.59")	113mm (4.45")	BLACK MARBLE	U\$ 12.00	Body+Nut

RF16 Rodcraft Common 16 Nut

Simple and Easy Nut to lock reel on the rods. It is applied to all Rodcraft and Fuji 16 size Reel Seats. - Fit to SKSPSN16



Light Gold (LG)

Chrome (C)

Gunsmoke (GS)

Aurora (AU)

MODEL	I.D	O.D	LENGTH	COLOR	PRICE
RF16	18.6mm	21.9mm	25.5mm	4 Colors	U\$ 2.50

RF16-BM Rodcraft RF16 Painted Nut (Black Marble)

Simple and Easy Nut to lock reel on the rods. It is applied to all Rodcraft and Fuji 16 size Reel Seats. - Fit to SKSPSN16, Stone Marble Painted.



Light Gold (LG)

Chrome (C)

Gunsmoke (GS)

Aurora (AU)

MODEL	I.D	O.D	LENGTH	COLOR	PRICE
RF16-BM	18.6mm	21.9mm	25.5mm	5 Colors	U\$ 3.50

Carbon Tube & Arbor

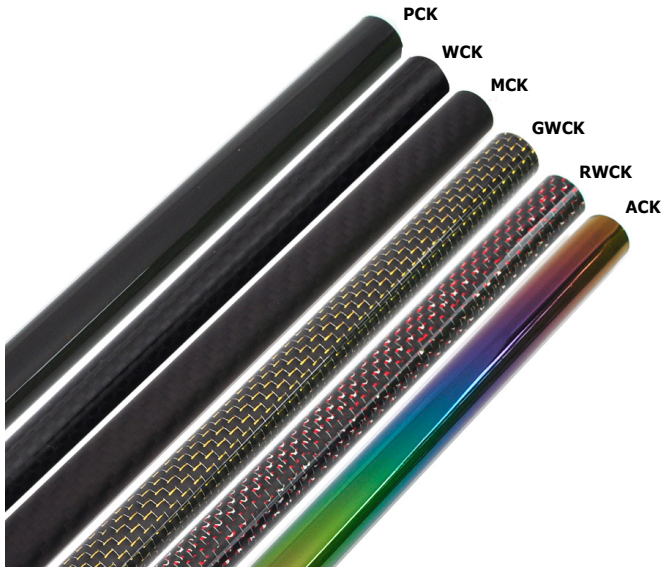
● Carbon Tube & Arbor

Carbon Tube Carbon Tube for Reel Seats and Rear Grip

Carbon Tube is used to replace blanks on rear Grip. Its usage is as below;

1. Enlongate Rear Grip with bonding existing blanks Rod turning
2. Inserts for Exposed Reel Seats
3. Connector for 2 hand grip.

The best for rod builder is using blanks as it is. But most of case, it does not fit perfectly. Carbon Tube covers a lot. It is a good functionaly and looks nice.



For ID:13mm Reel Seats

MODEL	PATTERN	I.D.	O.D	Length	PRICE
PCK130-350	PLAIN(Glossy)	11.0mm	12.8mm	350mm	US\$ 7.00
PCK130-450	PLAIN(Glossy)	11.0mm	12.8mm	450mm	US\$ 9.00
WCK130-350	1K Woven (Glossy)	11.0mm	12.8mm	350mm	US\$ 10.50
WCK130-450	1K Woven (Glossy)	11.0mm	12.8mm	350mm	US\$ 13.50
MCK130-350	1K Woven (Matte)	11.0mm	12.8mm	350mm	US\$ 10.50
MCK130-450	1K Woven (Matte)	11.0mm	12.8mm	450mm	US\$ 13.50
GWCK130-350	Gold 1K Woven (Glossy)	11.0mm	12.8mm	350mm	US\$ 12.25
GWCK130-450	Gold 1K Woven (Glossy)	11.0mm	12.8mm	450mm	US\$ 15.75
RWCK130-350	Red 1K Woven (Glossy)	11.0mm	12.8mm	350mm	US\$ 12.25
RWCK130-450	Red 1K Woven (Glossy)	11.0mm	12.8mm	450mm	US\$ 15.75
ACK130-350	Aurora (Glossy)	11.0mm	12.8mm	350mm	US\$ 10.50
ACK130-450	Aurora (Glossy)	11.0mm	12.8mm	450mm	US\$ 13.50

For ID:15mm Reel Seats

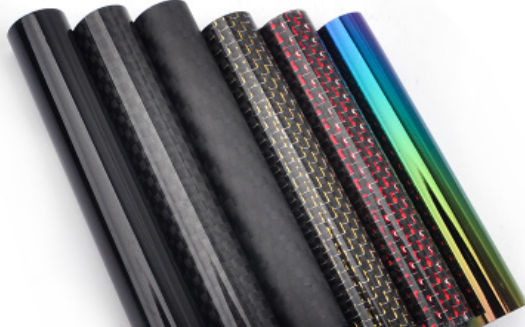
MODEL	PATTERN	I.D.	O.D	Length	PRICE
PCK150-400	PLAIN (Glossy)	13.0mm	14.8 mm	400mm	US\$10.00
PCK150-500	PLAIN (Glossy)	13.0mm	14.8 mm	500mm	US\$12.50
WCK150-400	1K Woven (Glossy)	13.0mm	14.8 mm	400mm	US\$14.00
WCK150-500	1K Woven (Glossy)	13.0mm	14.8 mm	500mm	US\$17.50
MCK150-400	1K Woven (Matte)	13.0mm	14.8 mm	400mm	US\$14.00
MCK150-500	1K Woven (Matte)	13.0mm	14.8 mm	500mm	US\$17.50
GWCK150-400	Gold 1K Woven (Glossy)	13.0mm	14.8 mm	400mm	US\$16.00
GWCK150-500	Gold 1K Woven (Glossy)	13.0mm	14.8 mm	500mm	US\$20.00
RWCK150-400	Red 1K Woven (Glossy)	13.0mm	14.8 mm	400mm	US\$16.00
RWCK150-500	Red 1K Woven (Glossy)	13.0mm	14.8 mm	500mm	US\$20.00
ACK150-400	Aurora (Glossy)	13.0mm	14.8 mm	400mm	US\$14.00
ACK150-500	Aurora (Glossy)	13.0mm	14.8 mm	500mm	US\$17.50

Carbon tube color and sizes we prepare don't cover all of blanks or reel seat. Especially, Rodcraft reel seat ID is 15.5mm. Ask for this size carbon tube if you need.

Carbon Arbor

Carbon Tube for Reel Seats Insert (Arbor)

PCK WCK MCK GWCK RWCK ACK



MODEL	PATTERN	I.D.	O.D	Length	PRICE
PCK130-85	PLAIN (Glossy)	11.0mm	12.7 mm	85mm	US\$2.50
WCK130-85	1K Woven (Glossy)	11.0mm	12.7 mm	85mm	US\$3.50
MCK130-85	1K Woven (Matte)	11.0mm	12.7 mm	85mm	US\$3.50
GWCK130-85	Gold 1K Woven (Glossy)	11.0mm	12.7 mm	85mm	US\$3.50
RWCK130-85	Red 1K Woven (Glossy)	11.0mm	12.7 mm	85mm	US\$3.50
ACK130-85	Aurora (Glossy)	11.0mm	12.7 mm	85mm	US\$3.50
PCK150-85	PLAIN (Glossy)	11.0mm	12.7 mm	85mm	US\$3.00
WCK150-85	1K Woven (Glossy)	11.0mm	12.7 mm	85mm	US\$4.00
MCK150-85	1K Woven (Matte)	11.0mm	12.7 mm	85mm	US\$4.00
GWCK150-85	Gold 1K Woven (Glossy)	11.0mm	12.7 mm	85mm	US\$4.00
RWCK150-85	Red 1K Woven (Glossy)	11.0mm	12.7 mm	85mm	US\$4.00
ACK150-85	Aurora (Glossy)	11.0mm	12.7 mm	85mm	US\$4.00



● Urethane & Aluminum Arbor

UAF

Urethane Tube for Reel Seats Inserts (Arbor)

Very light Urethane arbor to fit into reel seats unexposed like IPS16/VSS16/DPS16 etc.



MODEL	PATTERN	I.D.	O.D.	Length	PRICE
UAF-1306	Urethane	6.5mm	12.7 mm	85mm	US\$3.00
UAF-1307	Urethane	7.2mm	12.7 mm	85mm	US\$3.00
UAF-1308	Urethane	8.4mm	12.7 mm	85mm	US\$3.00
UAF-1309	Urethane	9.2mm	12.7 mm	85mm	US\$3.00
UAF-1508	Urethane	8.3mm	14.7 mm	85mm	US\$3.00
UAF-1509	Urethane	9.3mm	14.7 mm	85mm	US\$3.00
UAF-1510	Urethane	10.3mm	14.7 mm	85mm	US\$3.00
UAF-1511	Urethane	11.4mm	14.7 mm	85mm	US\$3.00

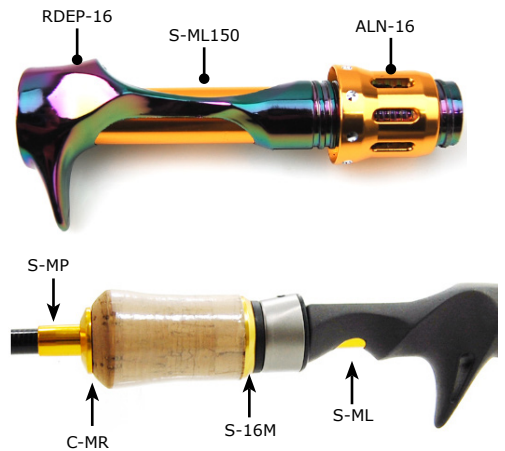
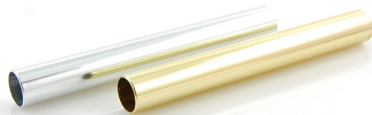
S-ML

Aluminum Tube for Fuji Reelseat (3 sizes)

Arbor is a essential to fit various sizes blanks into reel seats. You can use a aluminum if its is exposed like ACS,ECS and RDEP. It can be a good alternative.

Material - Aluminium/Color - 8 colors

MODEL	I.D.	O.D.	Length	PRICE
S-ML130	12mm	13mm	100mm	U\$4.00
S-ML150	14mm	15mm	100mm	U\$4.00
S-ML155	14.5mm	15.5mm	100mm	U\$4.00



S-MT150

Mesh Tube for Connector or Insert of I.D 15mm Fuji reel seat

Its size is the same with S-ML. You can apply this for reel seat and rear grip. Meshed aluminum require a lot of labor as its mesh should be treated manually. O.D 15mm and it goes with WCK150 Carbon tube.

Material - Aluminium/Color - 9 colors

MODEL	I.D.	O.D.	Length	PRICE
S-MT150	13mm	14.8mm	85mm	U\$ 15.00



Winding Checks

● General Winding Check

W-25R

For SK-16MF/MG or EK16F Series

You can combine this part with EVA or Cork fore grip which is assembled with KDPS-16 or KSKSS16/ASH and fit into SK-16MF/MG also.



Material - Aluminium/Color - 9 colors

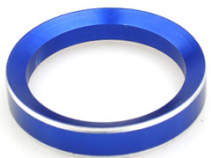
MODEL	I.D	O.D	Thickness	PRICE
W-25R130	13mm	25mm	5.3mm	U\$4.00
W-25R150	15mm	25mm	5.3mm	U\$4.00



W-27S

For Rear Grip or FUJI SK2 Reelseat-Rod building

You can apply this winding check in rear Grip or KSKSS16/ASH fore Grip. Simple silver 2 strips makes your rod smart.



Material - Aluminium/Color - 9 colors

MODEL	I.D	O.D	Thickness	PRICE
W-27S	21.4mm	27mm	5mm	U\$3.50



W-27T

For Rear Grip or KDPS16

It is used in rear Grip or FUJI SK2 Fore Grip with 27mm O.D. Furthermore, it is fit into KDPS16 also with ID. 21mm, not for KSKSS16. Two tone anodizing makes your rod luxurious.



Material - Aluminium/Color - 9 colors

MODEL	I.D	O.D	Length	PRICE
W-27T	21mm	27mm	5mm	U\$4.50



W-27U

General Winding Check for Rear Grip

This is most popular winding check not to imagine usage. As its thickness is only 1.5mm and can be applied to any EVA or Cork with little efforts to cut off a littl bit. You can imagine how to apply simple ring.



Material - Aluminium/Color - 9 colors

MODEL	I.D	O.D	Thickness	PRICE
W-27U	24mm	27mm	3mm	U\$1.50



● **General Winding Check**

W-27X For 2 Hand Grip with Carbon Tube

Cross-section of 2 hand rear grip is large enough with normal w/c. It is a solution. You can combine WCK130 or WCK150 Carbon Pipe as shown on example



Material - Aluminium/Color - 8 colors

MODEL	I.D	O.D	Thickness	PRICE
W-27X130	13mm	27mm	3.5mm	U\$4.00
W-27X150	15mm	27mm	3.5mm	U\$4.00



W-B General Winding Check

It is hinted from bullet or dew-drop. Base color is black and 8 colors will make your rod distinguished. Most popular sizes are arranged.



Material - Aluminium/Color - 8 colors

MODEL	I.D	O.D	Thickness	PRICE
W-B100	10mm	16mm	5mm	U\$2.50
W-B110	11mm	17mm	5mm	U\$2.50
W-B120	12mm	18mm	5mm	U\$2.50
W-B130	13mm	19mm	5mm	U\$2.50



W-C General purpose- Basic Rings

Its variation is 189 (21 sizes and 9 colors). Best selling winding checks for every usage. Most of your rods will be equipped with one or two.

Material - Aluminium/Color - 9 colors

MODEL	I.D	O.D	Thickness	PRICE
W-C070	7.0mm	13.0mm	3.0mm	U\$ 1.50
W-C075	7.5mm	14.0mm	3.0mm	U\$ 1.50
W-C080	8.0mm	14.0mm	3.0mm	U\$ 1.50
W-C085	8.5mm	15.0mm	3.0mm	U\$ 1.50
W-C090	9.0mm	15.0mm	3.5mm	U\$ 1.50
W-C095	9.5mm	16.0mm	3.5mm	U\$ 1.50
W-C100	10.0mm	16.0mm	3.5mm	U\$ 1.50
W-C105	10.5mm	17.0mm	3.5mm	U\$ 1.50
W-C110	11.0mm	17.0mm	3.5mm	U\$ 1.50
W-C115	11.5mm	18.0mm	3.8mm	U\$ 1.50
W-C120	12.0mm	18.0mm	3.8mm	U\$ 1.50
W-C125	12.5mm	19.0mm	3.8mm	U\$ 1.50
W-C130	13.0mm	19.0mm	3.8mm	U\$ 1.50
W-C135	13.5mm	19.5mm	3.8mm	U\$ 1.50
W-C140	14.0mm	20.0mm	4.0mm	U\$ 1.50
W-C145	14.5mm	20.5mm	4.0mm	U\$ 1.50
W-C150	15.0mm	21.0mm	4.0mm	U\$ 1.50
W-C155	15.5mm	21.5mm	4.3mm	U\$ 1.50
W-C160	16.0mm	22.0mm	4.3mm	U\$ 1.50
W-C165	16.5mm	22.5mm	4.3mm	U\$ 1.50
W-C170	17.0mm	23.0mm	4.3mm	U\$ 1.50



● General Winding Check

W-D

General purpose- Basic Rings

No other difference but its side shape is stright comparing with W-C. Furthermore, its range is from 7mm to 20mm.



Material - Aluminium/Color - 9 colors

MODEL	I.D	O.D	Thickness	PRICE
W-D070	7.0mm	13.5mm	3.0mm	U\$ 1.50
W-D075	7.5mm	14.0mm	3.0mm	U\$ 1.50
W-C080	8.0mm	14.5mm	3.0mm	U\$ 1.50
W-D085	8.5mm	15.0mm	3.0mm	U\$ 1.50
W-D090	9.0mm	15.5mm	3.5mm	U\$ 1.50
W-CD95	9.5mm	16.0mm	3.5mm	U\$ 1.50
W-D100	10.0mm	16.5mm	3.5mm	U\$ 1.50
W-D105	10.5mm	17.0mm	3.5mm	U\$ 1.50
W-D110	11.0mm	17.5mm	3.8mm	U\$ 1.50
W-D115	11.5mm	18.0mm	3.8mm	U\$ 1.50
W-D120	12.0mm	18.5mm	3.8mm	U\$ 1.50
W-D125	12.5mm	19.0mm	3.8mm	U\$ 1.50
W-D130	13.0mm	19.5mm	4.0mm	U\$ 1.50
W-D135	13.5mm	20.0mm	4.0mm	U\$ 1.50
W-D140	14.0mm	20.5mm	4.0mm	U\$ 1.50
W-D145	14.5mm	21.0mm	4.0mm	U\$ 1.50
W-D150	15.0mm	21.5mm	4.0mm	U\$ 1.50
W-D155	15.5mm	22.0mm	4.3mm	U\$ 1.50
W-D160	16.0mm	22.5mm	4.3mm	U\$ 1.50
W-D165	16.5mm	23.0mm	4.3mm	U\$ 1.50
W-D170	17.0mm	23.5mm	4.3mm	U\$ 1.50
W-D175	15.0mm	24.0mm	4.3mm	U\$ 1.50
W-D180	18.0mm	24.5mm	4.5mm	U\$ 1.50
W-D185	18.5mm	25.0mm	4.5mm	U\$ 1.50
W-D190	19.0mm	25.5mm	4.5mm	U\$ 1.50
W-D195	19.5mm	26.0mm	4.5mm	U\$ 1.50
W-D200	20.0mm	26.5mm	4.5mm	U\$ 1.50



W-F

General purpose- Basic Rings

The 2nd or 3rd sales record winding check for various purpose. This is very thin 1.5mm thicknees. If you prefer winding check not to reveal its existence, you can use it. Very slim and small one.



Material - Aluminium/Color - 9 colors

MODEL	I.D	O.D	Thickness	PRICE
W-F070	7.0mm	10.0mm	2.0mm	U\$ 1.50
W-F075	7.5mm	10.5mm	2.0mm	U\$ 1.50
W-F080	8.0mm	11.0mm	2.0mm	U\$ 1.50
W-F085	8.5mm	11.5mm	2.0mm	U\$ 1.50
W-F090	9.0mm	12.0mm	2.0mm	U\$ 1.50
W-F095	9.5mm	12.5mm	2.0mm	U\$ 1.50
W-F100	10.0mm	13.0mm	2.0mm	U\$ 1.50
W-F105	10.5mm	13.5mm	2.0mm	U\$ 1.50
W-F110	11.0mm	14.0mm	2.0mm	U\$ 1.50
W-F115	11.5mm	14.5mm	2.0mm	U\$ 1.50
W-F120	12.0mm	15.0mm	2.0mm	U\$ 1.50
W-F125	12.5mm	15.5mm	2.0mm	U\$ 1.50
W-F130	13.0mm	16.0mm	2.0mm	U\$ 1.50
W-F135	13.5mm	16.5mm	2.0mm	U\$ 1.50
W-F140	14.0mm	17.0mm	2.0mm	U\$ 1.50
W-F145	14.5mm	17.5mm	2.0mm	U\$ 1.50
W-F150	15.0mm	18.0mm	2.0mm	U\$ 1.50
W-F155	15.5mm	18.5mm	2.0mm	U\$ 1.50
W-F160	16.0mm	19.0mm	2.0mm	U\$ 1.50
W-F165	16.5mm	19.5mm	2.0mm	U\$ 1.50
W-F170	17.0mm	20.0mm	2.0mm	U\$ 1.50

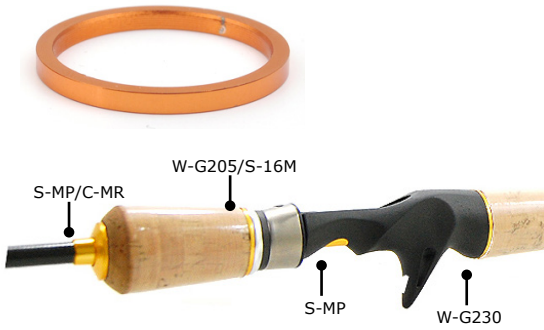


● General Winding Check

W-G

General & Special Winding Checks

Very simple ring but sizes indicate some reel seats and endcap is related. You can apply also in any difference purpose.



Material - Aluminium/Color - 9 colors

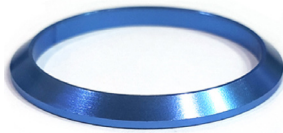
MODEL	I.D	O.D	Thickness	PRICE	USAGE
W-G205	20.5mm	25mm	1.5mm	U\$1.50	KDPS16
W-G210	21.2mm	24.8mm	2.0mm	U\$1.50	E-25K,KSKSS16
W-G215	21.5mm	27mm	1.5mm	U\$1.50	E-27K,ECS16,TCS16
W-G230	23mm	27.5mm	1.5mm	U\$1.50	ACS16



W-H

General Big Size Winding Check

Frankly speaking, I don't know what this will be applied. Very big size rods? Lt me know if you know. This is made with request of Austrailian friend. But he does not purcjhase at all. Very sad story.



Material - Aluminium/Color - 9 colors

MODEL	I.D	O.D	Thickness	PRICE
W-H280	28mm	34mm	3mm	U\$3.00
W-H300	30mm	36mm	3mm	U\$3.00
W-H320	32mm	38mm	3mm	U\$3.00



W-CN

Connector for different size reel seats and rear grip

Rodbulding components like reel seats and grip shows some figures like 23mm/25mm/27mm. If you find looks-good 25mm reel seats like SK16, but your grip O.D is 27mm. You will cut off to make it 25mm. You don't have to do so. You can use this winding check to connector two parts. Not bad in appearance.



Material - Aluminium/Color - 9 colors

MODEL	I.D	O.D	Thickness	PRICE
W-CNA130	13mm	27mm/23mm	10mm	U\$4.00
W-CNA150	15mm	27mm/23mm	10mm	U\$4.00
W-CNB130	13mm	25mm/23mm	10mm	U\$4.00
W-CNB150	15mm	25mm/23mm	10mm	U\$4.00
W-CNC130	13mm	27mm/25mm	10mm	U\$4.00
W-CNC150	15mm	27mm/25mm	10mm	U\$4.00



SSPR-170

Stainless Steel Winding Check



Material -Stainless Steel/ Color - 1 (Silver)

MODEL	I.D	O.D	Length	PRICE
SSSPR-170	17mm	25mm	5.3mm	U\$3.50

SSPW

Stainless Steel Winding Check



Material -Stainless Steel/ Color - 1 (Silver)

MODEL	I.D	O.D	Length	PRICE
SSPW-150	15mm	21.5mm	4mm	U\$3.50
SSPW-160	16mm	21.5mm	4mm	U\$3.50
SSPW-170	17mm	21.5mm	4mm	U\$3.50
SSPW-180	18mm	21.5mm	4mm	U\$3.50

● **Winding Check for Fuji KDPS16**

S-16M Basic Winding check for Fuji KDPS-16

Cork and EVA for KDPS16 foregrip is not thin to fit into. The smooth and perfect combine fore-grip and KDPS-16 is S-16M. It can be used for rear grip accent ring also.



Material - Aluminium/Color - 9 colors

MODEL	I.D	O.D	Thickness	PRICE
S-16M	20.5mm	25mm	3.5mm	U\$2.00



S-16MH Winding check for Fuji KDPS-16

Rodbuilding components for Fuji KDPS-16 nut. It can be used for another purpose.It depends on your imagination.



Material - Aluminium/Color - 9 colors

MODEL	I.D	O.D	Length	PRICE
S-16MH	20.5mm	22mm/25mm	10mm	U\$2.50



S-16MG/MP Special winding checks for KDPS16 to replace for-grip

This is General Winding check for Rod Building. It can be used for Saltwater rod. There 4 sizes according to I.D.



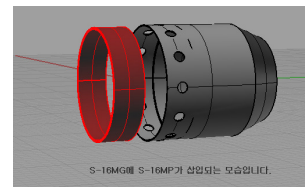
Material - Aluminium/Color - 9 colors

MODEL	I.D	O.D	Length	PRICE
S-16MG	20.5mm	22mm	23mm	U\$3.50
S-16MP	20.5mm	21mm	5mm	U\$1.50

S-16MG (Silver/Gunsmoke)



S-16MP (9color)



S-16MR/MSB Winding check for Fuji KDPS-16 (S-16MR + S-16MSB)

Complicated version of S-16M for KDPS16. 2 winding checks are sold separately.



Material - Aluminium/Color - 9 colors

MODEL	I.D	O.D	Length	Color	PRICE
S-16MR	21mm	25mm	7mm	9	U\$3.00
S-16MSB	24mm	25mm	3mm	9	U\$2.00



S-16MR (9COLOR)



S-16MSB (9COLOR)



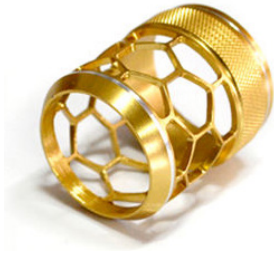
● **Winding Check for Fuji KDPS16**

S-16ME **Winding Check for KDPS16**

This is special winding check only for FUJI KDPS-16. It can be applied to KSKSS16/ASH But its length is longer than length of KSKSS16/ASH. You should cut S-16ME by 2mm. CK22 Carbon tube can be inserted into S-16ME.

Material - Aluminium/Color - 8 colors

MODEL	I.D	O.D	Length	PRICE
S-16ME	22.5mm	25.5mm	30.5mm	U\$ 9.00



S-23R **Winding check only for KDPS16**

Very thin and tight not to bond to fit into KDPS16. Very effective way to hide black plastics.

Material - Aluminium/Color - 9 colors

MODEL	I.D	O.D	Length	PRICE
S-23R	22.2mm	23.2mm	2.5mm	U\$1.50



S-22T **Specialized winding check only for KDPS16**

This is 0.6or 0.7mm very thin. This item is prepared only for KDPS-16. Black(Reel Seat) + Black (Carbon Tube) is too simple. It is accent ring to separate both blacks.

Material - Aluminium/Color - 9 colors

MODEL	I.D	O.D	Thickness	PRICE
W-205B	20.5mm	21.8mm	1mm	U\$1.50



● **Winding Check for Fuji KDPS16**

CK22

Carbon Tube Foregrip for KDPS16

This is used for FUJI KDPS-16 instead of Foregrip. There are 2 sizes in length 20mm(0.79") and 40mm (1.57"). And there are 4 carbon patterns. Slim and smart.

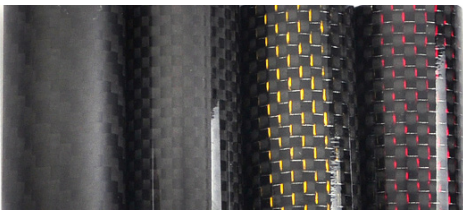
Material - Carbon

MODEL	I.D	O.D	Length	Color	PRICE
WCK22-20	20.5mm	21.7mm	20mm	Bright Black	US\$ 3.00
MCK22-20	20.5mm	21.7mm	20mm	Matte Black	US\$ 3.00
GWCK22-20	20.5mm	21.7mm	20mm	Bright Gold	US\$ 3.50
RWCK22-20	20.5mm	21.7mm	20mm	Matte Red	US\$ 3.50
WCK22-40	20.5mm	21.7mm	40mm	Bright Black	US\$ 5.00
MCK22-40	20.5mm	21.7mm	40mm	Matte Black	US\$ 5.00
GWCK22-40	20.5mm	21.7mm	40mm	Bright Gold	US\$ 5.50
RWCK22-40	20.5mm	21.7mm	40mm	Matte Red	US\$ 5.50



WCK22-20

WCK22-40



MCK22 WCK22 GWCK22 RWCK22



WCK22-40

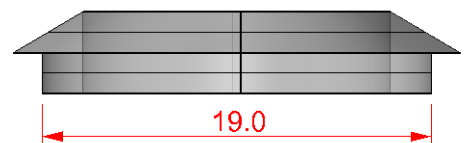


WCK22-B For CK22 (WCK22,MCK22 etc) and foregrip

Attractive items to finish in front of CK22 like WCK22, CK22 and GWCK22. It is simple and neat to complete with WCK22-B. Furthermore, if you use WCK22-B190, you can show Reel Seat screw out of KDPS16

Material - Aluminium/Color - 9 colors

MODEL	I.D	O.D	Length	PRICE
WCK22-B150	15.0mm	22mm	4mm	US\$2.00
WCK22-B170	17.0mm	22mm	4mm	US\$2.00
WCK22-B190	19.0mm	22mm	4mm	US\$2.00



Fit into CK22 inside with bonding space

● **Winding Check for Reel Seats (16 size) - Fore Grip**

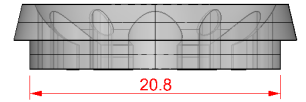
S-FR Flower Ring for forgrip and SK-16MK

Size of insert part is almost the same with that of KDPS-16. 20.8mm is used for foregrip or SK-16MK



Material - Aluminium/Color - 9 colors

MODEL	I.D	O.D	Thickness	PRICE
S-FR130	13mm	23.5mm	5.4mm	U\$4.00
S-FR140	14mm	23.5mm	5.4mm	U\$4.00



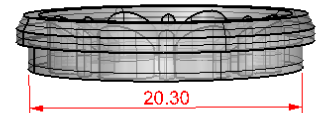
S-FU Flower Ring for KDPS-16 or WCK22

Insert part size is smaller than S-FR and it is inserted into KDPS16 and CK22 Series (WCK22, MCK22 etc)



Material - Aluminium/Color - 9 colors

MODEL	I.D	O.D	Length	PRICE
S-16FU110	11mm	22mm	4mm	U\$ 4.00
S-16FU120	12mm	22mm	4mm	U\$4.00



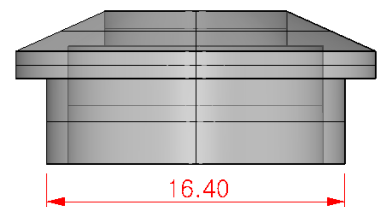
S-MR Forgrip Winding Check - Insert type

It is one of basic winding check to insert into foregrip EVA or Crok. Especially, EF-XJ and EF-ZJ has a hole for this winding check. Very easy to install.



Material - Aluminium/Color - 9 colors

MODEL	I.D	O.D	Length	PRICE
S-MR080	8mm	20mm	8.5mm	U\$2.50
S-MR090	9mm	20mm	8.5mm	U\$2.50
S-MR100	10mm	20mm	8.5mm	U\$2.50
S-MR110	11mm	20mm	8.5mm	U\$2.50
S-MR120	12mm	20mm	8.5mm	U\$2.50
S-MR130	13mm	20mm	8.5mm	U\$2.50
S-MR140	14mm	20mm	8.5mm	U\$2.50
S-MR150	15mm	20mm	8.5mm	U\$2.50



● **Winding Check for Reel Seats (16 size) - Fore Grip**

S-16NUT

Locking nut for FUJI 16size Reelseat - SKSPSN16

If you are worried about loosen nut, you can apply it to reel seats. It is fit into 16 size Fuji Reel seats only.



Material - Aluminium/Color - 9 colors

MODEL	I.D	O.D	Length	Color	PRICE
S-16NUT	17.4mm	21.5mm	7mm	8	U\$3.50



S-16FWA/B

Connector between foregrip and Reel Seats Screw

2 winding checks difference is thickness. 2mm and 2.5mm. 0.5mm can be nothing but it is different when you install. I recommend 2.5mm. S-16FWB. It depends on your preference.



Material - Aluminium/Color - 9 colors

MODEL	I.D	O.D	Length	PRICE
S-16FWB	15mm	22.0mm	2.5mm	U\$ 2.00



S-16TR

Screw Insert Winding Check

Its insert part O.D. is 15.3mm and it means it does not fit to 15mm I.D. Reel Seat. You can apply this winding check to FUJI ECS16 / DPSM16 only. Rodcraft SK-16SC and 15.5mm I.D. reel seats are applicable.



Material - Aluminium/Color - 6 colors

MODEL	I.D	Front O.D/ Rear O.D	Length	PRICE
S-16TR	14.5mm	15.3mm / 19.5mm	18mm	U\$4.00



● **Winding Check for Reel Seat (16size)-Lip Stick**

S-16TG

Shotgun Lipstick for Fuji 16 size Reel Seat

Shotgun style lipstick for 16 sizes Reel seat regardless of I.D. If Rod's main color is red, it is perfect with red plus achromatic color. But you should consider weight of this winding check. Average weight is 6g more or less and it can be a burden on lightweight rods. Recommended for heavy power rods.



Material - Aluminium/Color - 4 colors

MODEL	I.D	O.D/Max O.D	Length	PRICE
S-16TG080	8mm	11mm	48mm	U\$7.00
S-16TG090	9mm	12mm	48mm	U\$7.00
S-16TG100	10mm	13mm	48mm	U\$7.00
S-16TG110	11mm	14mm	48mm	U\$7.00



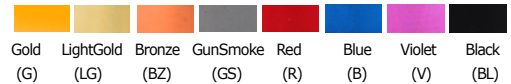
S-16FI

Short Lipstick for Fuji 16 size Reel Seat

Very cute lipstick to apply light weight rods. It is more or less 1g. 2 tone anodizing color is splendid in front of reel seats.

Material - Aluminium/Color - 8 colors

MODEL	I.D	O.D/Max O.D	Length	PRICE
S-16FI090	9mm	10mm/16.7mm	10mm	U\$ 4.00
S-16FI100	10mm	11mm/16.7mm	10mm	U\$ 4.00
S-16FI110	11mm	12mm/16.7mm	10mm	U\$ 4.00



S-16TL

16 size Reel Seat Lip Stick-Short

Very cute lipstick to apply light weight rods. It is the same with S-16FI. Its size range is from ID 8mm to 13mm by 1mm.

Material - Aluminium/Color - 8 colors

MODEL	I.D	O.D	Length	PRICE
S-16TL080	8mm	16.7mm	14mm	U\$ 3.50
S-16TL090	9mm	16.7mm	14mm	U\$ 3.50
S-16TL100	10mm	16.7mm	14mm	U\$ 3.50
S-16TL110	11mm	16.7mm	14mm	U\$ 3.50
S-16TL120	12mm	16.7mm	14mm	U\$ 3.50
S-16TL130	13mm	16.7mm	14mm	U\$ 3.50



It can be applied to Split Grip also.

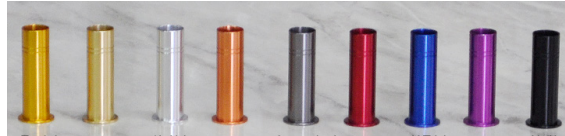
● **Winding Check for Reel Seat (16size)-Lip Stick**

S-16NC **16 size Reel Seat Lip Stick- Long & Light**

Long but light-weight Lip Stick. Its weight is less 2g.

Material - Aluminium/Color - 9 colors

MODEL	I.D	O.D	Length	PRICE
S-16NC090	9.0mm	10.0mm	41.0mm	U\$3.50
S-16NC100	10.0mm	11.0mm	41.0mm	U\$3.50
S-16NC110	11.0mm	12.0mm	41.0mm	U\$3.50



Gold (G) LightGold (LG) Silver (S) Bronze (BZ) GunSmoke (GS) Red (R) Blue (B) Violet (V) Black (BL)



S-MP **Tube winding check for lipstick and reel seats insert**

This is small aluminum tube for multi-purpose. It can be used for reel seat and blank also.

Material - Aluminium/Color - 9 colors

MODEL	I.D	O.D	Length	PRICE
S-MP070	7.0mm	8.5mm	35mm	U\$ 2.50
S-MP075	7.5mm	9.0mm	35mm	U\$ 2.50
S-MP080	8.0mm	9.5mm	35mm	U\$ 2.50
S-MP085	8.5mm	10.0mm	35mm	U\$ 2.50
S-MP090	9.0mm	10.5mm	35mm	U\$ 2.50
S-MP095	9.5mm	11.0mm	35mm	U\$ 2.50
S-MP100	10.0mm	11.5mm	35mm	U\$ 2.50
S-MP105	10.5mm	12.0mm	35mm	U\$ 2.50
S-MP110	11.0mm	12.5mm	35mm	U\$ 2.50
S-MP115	11.5mm	13.0mm	35mm	U\$ 2.50
S-MP120	12.0mm	13.5mm	35mm	U\$ 2.50
S-MP125	12.5mm	14.0mm	35mm	U\$ 2.50
S-MP130	13.0mm	14.5mm	35mm	U\$ 2.50



Gold (G) LightGold (LG) Silver (S) Bronze (BZ) GunSmoke (GS) Red (R) Blue (B) Violet (V) Black (BL)



S-16FH **For 16 size Reel seat and SKSPSN16**

It is designed to cover the front of Fuji 16 size Reel seat. As it is not made with insert part, it can be applied regardless of reel seats I.D. But it should be careful in bonding.

Material - Aluminium/Color - 9 colors

MODEL	I.D	O.D	Thickness	PRICE
S-16FH080	8mm	16.8mm	2.6mm	U\$1.50
S-16FH090	9mm	16.8mm	2.6mm	U\$1.50
S-16FH100	10mm	16.8mm	2.6mm	U\$1.50
S-16FH110	11mm	16.8mm	2.6mm	U\$1.50
S-16FH120	12mm	16.8mm	2.6mm	U\$1.50
S-16FH130	13mm	16.8mm	2.6mm	U\$1.50
S-16FH140	14mm	16.8mm	2.6mm	U\$1.50
S-16FH150	15mm	16.8mm	2.6mm	U\$1.50



ACS-16



SKSPSN

Gold (G) LightGold (LG) Silver (S) Bronze (BZ) GunSmoke (GS) Red (R) Blue (B) Violet (V) Black (BL)

● **Winding Check for Reel Seats (16 size) - Rear Grip**

S-16RSA/B Rear part of Reel Seats Winding check -Basic and Simple

S-16RSA can be applied to ECS16, TCS16 ACS16 and S-RSB is for ACS16.



Material - Aluminium/Color - 9 colors

MODEL	I.D.	O.D.	Length	PRICE
S-16RSA	18mm	27.0mm	4.5mm	U\$ 2.50
S-16RSB	18mm	27.8mm	4.5mm	U\$ 2.50



S-H

S-W

S-R

General Winding Check for CK130/150 Carbon Pipe

All 3 items can be used with carbon tube CK130 or CK150 Series like WCK/MACK/GWCK/PACK etc.

If you use carbon tube, it will go through EVA/Cork and Reel Seats. The contact point is too simple and 3 items will be helpful to connect different material.



Material - Aluminium/Color - 9 colors

MODEL	I.D	O.D	Length	PRICE
S-H130	13mm	15mm	2mm	U\$ 1.50
S-H150	15mm	15mm	2mm	U\$ 1.50



Material - Aluminium/Color - 9 colors

MODEL	I.D	O.D	Length	PRICE
S-R130	13mm	17mm	2mm	U\$ 1.50
S-H150	15mm	17mm	2mm	U\$ 1.50



Material - Aluminium/Color - 9 colors

MODEL	I.D	O.D	Length	PRICE
S-R130	13mm	18mm	3mm	U\$ 1.50
S-H150	15mm	18mm	3mm	U\$ 1.50



WCK27

Carbon Tube for Rear Grip or Replacement

This is used for Rear Grip instead of Cork or EVA. There are 3 sizes in length 13mm (0.51") / 40mm (1.38") / 70mm (2.76")



WCK27-17 WCK27-35 WCK27-70

WCK27-70



Material - Carbon

MODEL	I.D	O.D	Thickness	Length	PRICE
WCK27-13	24mm	27mm	1.5mm	13mm	U\$3.00
WCK27-35	24mm	27mm	1.5mm	35mm	U\$6.00
WCK27-70	24mm	27mm	1.5mm	70mm	U\$10.00



● **Winding Check for SK16 Reel Seat -KSKSS16/ASH**

SK-16RA/RB Accent Ring for KSKSS16/ASH

Simple ring to fit CK25 Carbon tube on the KSKSS16/ASH. Its O.D is same with CK25 Carbon rings. Two thickness, 1mm and 2mm are suggested to meet different feeling.



SK16-RA



SF16-RB

Material - Aluminium/Color - 9 colors

MODEL	I.D	O.D	Length	PRICE
SK16-RA	21.2mm	24.8mm	1mm	U\$1.50
SK16-RB	21.2mm	24.8mm	2mm	U\$1.50



CK25-07 Carbon Tube Ring for KSKSS16/ASH and Reargrip (E-25K Combination)

Its size is the same with SK-16RA/RB and can express Carbon +Anodized ring combination



Material - CARBON

MODEL	I.D	Max O.D	Length	Remarks	PRICE
WCK25-07	23mm	24.8mm	7mm	Bright Black	U\$ 2.50
MCK25-07	23mm	24.8mm	7mm	Matte Black	U\$ 2.50
GWCK25-07	23mm	24.8mm	7mm	Bright Gold	U\$ 2.80
RWCK25-07	23mm	24.8mm	7mm	Bright Red	U\$ 2.80



WCK25 MCK25 GWCK25 RWCK25



WCK25-7 Ring with KSKSS16/ASH



25mm Endcap, E-25K is another application

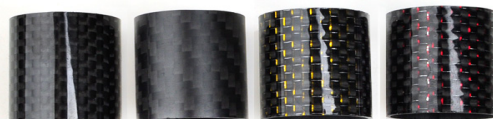
CK25-27 Carbon Tube Ring for KSKSS16/ASH and Reargrip (E-25K Combination)

KSKSS16/ASH is not easy to install EVA or Cork Grip with good shape. You can replace it with carbon or Aluminum. Carbon ring is one of choice you can.



Material - CARBON

MODEL	I.D	Max O.D	Length	Remarks	PRICE
WCK25-27	23mm	24.8mm	27mm	Bright Black	U\$ 4.00
MCK25-27	23mm	24.8mm	27mm	Matte Black	U\$ 4.00
GWCK25-27	23mm	24.8mm	27mm	Bright Gold	U\$ 4.50
RWCK25-27	23mm	24.8mm	27mm	Bright Red	U\$ 4.50



WCK25 MCK25 GWCK25 RWCK25



WCK25-7 Ring with KSKSS16/ASH

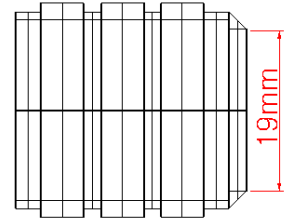
● **Winding Check for SK16 Reel Seat -KSKSS16/ASH**

SK-16MK Foregrip Insert for Fuji KSKSS16/ASH

Fuji SK2 Reel seat, KSKSS16/ASH is not easy to make for grip with Cork or EVA. SK16-MK is made to fit this reel seat. It can replace Cork or EVA for SK2 16 Reel Seat foregrip.

Material - Aluminium/Color - 8 colors

MODEL	I.D	O.D	Thickness	Length	PRICE
SK16-MK	19mm	25mm	1.5mm	27mm	U\$4.50



If you prefer Screw part of Reel seat or SKSPSN16 to go through, it is a good choice.

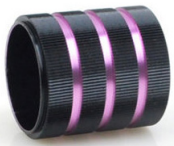


SK-16MH Foregrip Insert for Fuji KSKSS16/ASH

Fuji SK2 Reel seat, KSKSS16/ASH is not easy to make for grip with Cork or EVA. SK16-MK is made to fit this reel seat. It can replace Cork or EVA for SK2 16 Reel Seat foregrip. It is perfectly the same with SK-16MK but front part is different. You can adjust color and size with W-R25 winding check.

Material - Aluminium/Color - 8 colors

MODEL	I.D	O.D	Length	PRICE
SK16-MH	21.2mm	25mm	27mm	U\$ 5.00



SK-16MF/MG Meshed/Plain Winding check for KSKSS16/ASH

Very unique design to make a mesh and reveal another color inside.

Material - Aluminium/Color - 9 colors

MODEL	I.D	Max O.D	Length	Remarks	PRICE
SK16-MF	27mm	22.5mm	27mm	Meshed W/C	U\$ 9.00
SK16-MG	22.3mm	21.2mm	23mm	Plain W/C	U\$ 4.00



SK-16MF



SK-16MG



Combination of SK-16MF and SK-16MG

● **Winding Check for SK16 Reel Seat -KSKSS16/ASH & Screw**

SK-16ZL Foregrip Insert for Fuji KSKSS16/ASH

It is applied to Fuji SK16 KSKSS16/ASH and KDPS-16. In case of KDPS-16, its I.D. is larger somewhat

Material - Aluminium/Color - 8 colors

MODEL	I.D	O.D	Length	PRICE
SK16-ZL	21.2mm	25mm	27mm	US\$ 4.50



SK-16M Basic winding check for KSKSS16/ASH

KSKSS16/ASH is thicker than KDPS16 and it is reluctant to use EVA or Cork as foregrip. If you prepre Cork or EVA, SK-16M will assist you to make them smooth. It is the same role with S-16M.

Material - Aluminium/Color - 8 colors

MODEL	I.D	O.D	Length	PRICE
SK16-M	21.2mm	27.4mm	3mm	US\$ 2.00

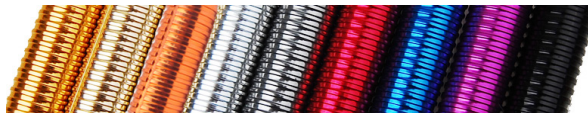


SK-16SC Screw to replace Fuji SKSPSN16

SKSPSN16 has the same specification with Fuji 16 size Reel seats. SK-16SC is compatible perfectly with SKSPSN16.

Material - Aluminium/Color - 9 colors

MODEL	I.D	Max O.D	Length	PRICE
SK16-SC	15.5mm	18.0mm	46.5mm	US\$ 6.00



● **Winding Check for SK16 Reel Seat -Body Connector**

SK-16G Connector for SK16 Reel Seats (Light Weight)

Thinner and thinner as possible. Aluminum is not strong to make it 1mm or 2mm thickness. It will be the best as much as blanks disposed. You can use WCK130 Carbon Tube if blank is too thin not to fit into.

Material - Aluminium/Color - 9 colors

MODEL	I.D	O.D	Length	PRICE
SK16-G090	9mm	10.5mm	46mm	U\$7.00
SK16-G110	11mm	12.5mm	46mm	U\$7.00
SK16-G130	13mm	14.5mm	46mm	U\$7.00



WCK130 is used for perfect fitting.



SK-16F130 Connector for SK16 Reel Seats (Normal Weight)

This is test version for SK-16G. But it is a good to use WCK130 inserts. Just heavier by 1g than SK-16G. It can be another choice.



Material - Aluminium/Color - 8 colors

MODEL	I.D	O.D	Length	PRICE
SK16-F130	13mm	18mm	46mm	U\$ 6.00



SK-16C130 Connector for SK16 Reel Seats (Heavy Weight)

It is basic connector for FUJI SKSS16 and SKSPSN16. It is cost effective not to use insert or try to make a size fit for heavy weight rods.

Material - Aluminium/Color - 8 colors

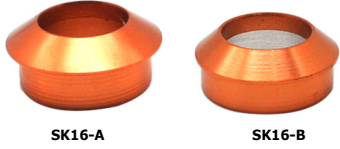
MODEL	I.D	O.D/Max O.D	Length	PRICE
SK16-C130	13.0mm	16.5mm/18mm	46mm	U\$ 5.50



● **Winding Check for SK16 Reel Seat - Connector & Rear Part**

SK-16A/B For SK16 SKSPSN16, SK16-SC and SKST16

This is just for SK16 KSPSN, SK16-SC and SKST16. If you prefer to uncover blank as it is, it will be helpful.



Material - Aluminium/Color - 9 colors

MODEL	I.D	Max O.D	Length	PRICE
SK16-A090	9.0mm	16.5mm	8mm	US\$ 2.00
SK16-A100	10.0mm	16.5mm	8mm	US\$ 2.00
SK16-A110	11.0mm	16.5mm	8mm	US\$ 2.00
SK16-A120	12.0mm	16.5mm	8mm	US\$ 2.00
SK16-A130	13.0mm	16.5mm	8mm	US\$ 2.00
SK16-B090	9.0mm	18.0mm	8mm	US\$ 2.00
SK16-B100	10.0mm	18.0mm	8mm	US\$ 2.00
SK16-B110	11.0mm	18.0mm	8mm	US\$ 2.00
SK16-B120	12.0mm	18.0mm	8mm	US\$ 2.00
SK16-B130	13.0mm	18.0mm	8mm	US\$ 2.00



SK-16D/E For SK16 SKSPSN16, SK16-SC and SKST16

This is just for SK16 KSPSN, SK16-SC and SKST16. If you prefer to uncover blank as it is, it will be helpful.



Material - Aluminium/Color - 8 colors

MODEL	I.D	Max O.D	Length	PRICE
SK16-D150	15.0mm	18.0mm	3.0mm	US\$ 2.00
SK16-E150	15.0mm	16.8mm	3.0mm	US\$ 2.00



SK-16CN Rear part of SK16 Reel Seat and grip

This winding check make it possible to use normal 27mm Dia. rear grip to SK2-16 reel seat. It means it makes SK2-16 reel seat come to use like Fuji ACS-16, TCS-16, ECS-16.



Material - Aluminium/Color - 9 colors

MODEL	I.D	O.D	Length	PRICE
SK16-CN	15mm	27mm	12mm	US\$3.50



SK-16RSR Rear part of SK16 Reel Seat and grip

This is winding check for decoration of FUJI SK6 Reel seat End.



Material - Aluminium/Color - 9 colors

MODEL	I.D	O.D	Length	PRICE
SK16-RSR	17mm	23mm	4mm	US\$2.00



● Winding Check for TVS16 Reel Seat

TV-16A Lip Stick for TVS16 Reel Seats

Lip Stick installation is common for TVS16 due to its slim body. It can be used in rear part of TVS16 as shown below.

Material - Aluminium/Color - 8 colors

MODEL	I.D	O.D	Width	PRICE
TN16-A080	8mm	20mm	15mm	U\$4.50
TN16-A090	9mm	20mm	15mm	U\$4.50

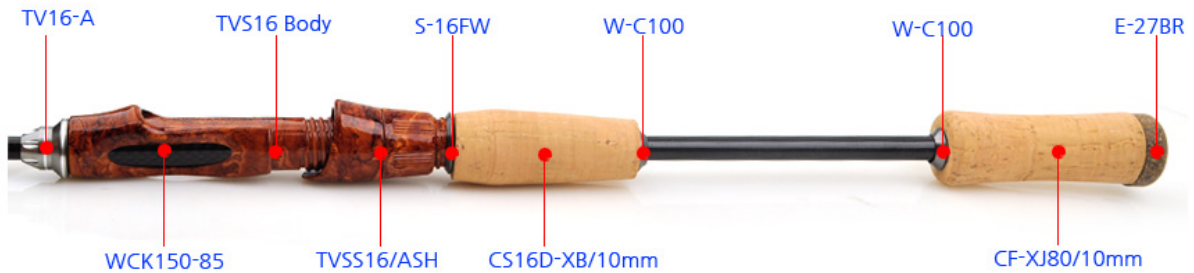


TV-16RSR Winding check for Fuji TV16 Reel Seat

Its usage is same with S-166RSR and SK-16RSR. insert part make a bonding tightly with reel seats.

Material - Aluminium/Color - 9 colors

MODEL	I.D	O.D	Length	PRICE
TV16-RSR	15mm	20mm	3mm	U\$ 2.00



● Endcap - Aluminum + Rubber

E-27MH Endcap with Rubber Butt

E-27Z Endcap with Rubber Butt



Material -Aluminum + Rubber/Color - 9 colors

MODEL	I.D	O.D	Length	PRICE
E-27MH	20mm	26.4mm	9mm	U\$4.50



Material -Aluminum + Rubber/Color - 9 colors

MODEL	I.D	O.D	Length	PRICE
E-27Z	20mm	27mm	9mm	U\$4.00



E-27F Endcap with Rubber Slim Butt

Slim rubber ring wind Aluminum butt cap and looks smart. It is a best selling endcap to cover 27~28mm Reargrip.



Material -Aluminum + Rubber/Color - 9 colors

MODEL	O.D	Length	PRICE
E-27F	27mm	44mm	U\$3.00



E-25K/27K Butt cap winding check

You can choose 25mm/27mm in diameter. PVC is used instead of Rubber. PVC is harder than rubber. W-G205/W-215 winding check included.



Material - Aluminium+PVC /Color - 9colors

MODEL	O.D	Length	COM	PRICE
E-25K	25mm	22 mm	W-G205	U\$4.00
E-27K	27mm	22 mm	W-G215	U\$4.00



Components : Metal part + PVC



Assembled



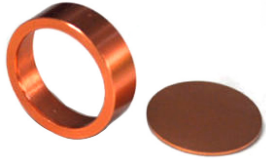
● Endcap - Aluminum or Brass

E-UA Aluminum Insert-Type Endcap

This is unique endcap which is inserted into rear grip. You should engrave EVA or Cork to install. Hand writing or laser marking can be applied to plate to make it distinguished.

Material - Aluminium/Color - 9colors

MODEL	I.D	O.D	Length	PRICE
E-UA	18mm	20mm	6 mm	U\$3.50



E-27A Aluminum Weighted 27mm Endcap w/Brass Long Nut

Aluminum weighted Endcap will be adjusted with q'ty of Aluminum weight. It can be installed by 3 aluminum weights.

Material - Aluminum + Brass(Female screw)+ Rubber

MODEL	I.D	O.D	Length	Weight	PRICE
E-27A	7mm	27mm	27mm	13mm	U\$7.00



Components : Metal parts + Rubber (No bonding) as shown

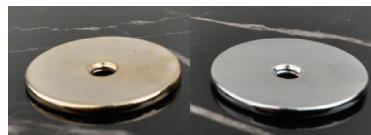


Weight Balance Aluminum/Brass Weight for E-27A, E-27B, E-27C

This is optional part only for E-27A E-27B E-27C Weight. You can add weight with E-27NA(Aluminum), DB27(Brass) and DB21(Brass). You should add W-27T if you use DB21.



E-27NA



DB27 (G)

DB27(S)



DB21 (G)



DB21(S)

E-27NA does not have a Screw line to fit due to short thickness.

MODEL	Material	I.D	O.D	Thickness	Weight	Color	PRICE
E-27NA	Aluminum	5mm	27mm	2mm	3g	9 Colors	U\$2.00
DB27	Brass	4.2mm	27mm	2mm	9g	Gold/Silver	U\$3.00
DB21	Brass	4.2mm	21mm	5mm	13.5g	Gold/Silver	U\$3.00

9 Colors are available for E-27NA



● Endcap - Stainless Steel & Rubber Cork

SSPE

Stainless Steel End Cap



SSPEC



SSPES



SSPER

MODEL	Material	I.D	Max O.D	Length	Weight	Color	PRICE
SSPEC	Stainless Steel	12mm	20mm	28mm	27g	Silver	U\$6.50
SSEPS	Stainless Steel	12mm	20mm	19mm	22g	Silver	U\$5.50
SSPER	Stainless Steel	12mm	20mm	19mm	22g	Silver	U\$5.50

E-27/29ZA

Butt Cap for Blind Gimbal

Rubber material endcap which is somewhat elastic. Fit to 27mm and 29mm Grip



Material - Rubber/ No color Choice! Only Black

MODEL	I.D	Min O.D	Length	PRICE
E-27ZA	21mm	27mm	46.5mm	U\$3.00
E-29ZA	25mm	29mm	48.5mm	U\$3.00

E-27ZB

Butt Cap for Connector Gimbal

Rubber material endcap which is somewhat elastic. fit to 27mm(1.06") Grip



Material - Rubber/ No color Choice! Only Black

MODEL	I.D	O.D	Length	PRICE
E-27ZB	19mm	27mm	44mm	U\$3.50

End Cap

Rubber Cork Buttcap Series

Rubber cork is harder than natural cork and it is used for endcap. 5 types of endcap and 2 sizes hole are available.



E-27BR



E-27BS



E-27BW



E-27BK



E-27BT

Material -Rubber Cork

MODEL	I.D	O.D	Length	PRICE
E-27BR	13mm /15mm	28.0mm	12mm	U\$2.00
E-27BS	13mm /15mm	28.0mm	12mm	U\$2.00
E-27BW	13mm /15mm	31.0mm	12mm	U\$2.00
E-27BK	13mm /15mm	32.0mm	28mm	U\$2.50
E-27BT	13mm /15mm	31.0mm	28mm	U\$2.50

E-27BR



E-27BS



E-27BW



EVA Grip

● EVA Grip - Exclusive usage for Reel Seats

EA16D For ACS-16 Reel Seat Grip

ACS/ECS/TCS fitting 2 hand Grip. 3 sizes I.D. are available.



EA16D-XA85



EA16D-XC90

Material - EVA

MODEL	I.D.	Min O.D.	Max O.D.	LENGTH	PRICE
EA16D-XA	10mm/13mm/15mm	19mm	28mm	90mm	U\$ 4.00
EA16S-XC	10mm/13mm/15mm	19mm	28mm	90mm	U\$ 4.00

EA16S For ACS-16 Reel Seat Grip

ACS16/ECS16/TCS16 fitting one hand grip.



EA16S-XA



EA16S-XB

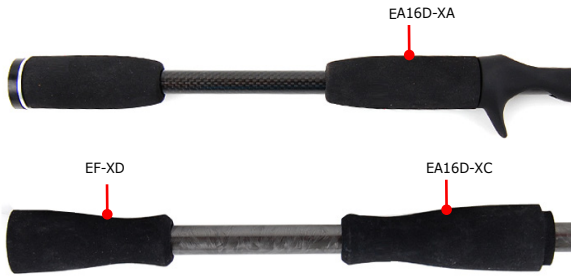
Material - EVA

MODEL	I.D.	Min O.D.	Max O.D.	LENGTH	PRICE
EA16S-XA	10mm/13mm/15mm	23mm	28mm	230mm	U\$ 9.00
EA16S-XB	- /13mm/15mm	23mm	28mm	230mm	U\$ 13.00

EA16S-XB Includes WCK27-13 Carbon,W-27U winding check



EA16S-XB



EA16D-XA

EF-XD

EA16D-XC

EV16D For VSS16 Reel Seat Grip

VSS16 fitting 2 hand rear grip.



EV16D-XA110



EV16D-XB085



EV16D-XC120

Material - EVA

MODEL	I.D.	Min O.D.	Max O.D.	Length	Price
EV16D-XA110	10mm/13mm	21mm	23mm	110mm	U\$ 5.00
EV16D-XB085	10mm/13mm	20.5mm	23.5mm	85mm	U\$ 4.00
EV16D-XC120	10mm/13mm	18mm	24mm	120mm	U\$ 5.50

EV16S For VSS16 Reel Seat Grip

VSS16 fitting 1 hand rear grip.



Material - EVA

MODEL	I.D.	Min O.D.	Max O.D.	Length	Hardness	Price
EV16S-XA	10mm/13mm	21mm	23mm	110mm	70	U\$ 9.00
EV16S-ZA	10mm/13mm	21mm	28mm	250mm	80	U\$ 11.00



EF-XD

EV16D-XA



EV16D-XB

● EVA Grip - Exclusive usage for Reel Seats

EI16D For IPS16 Reel Seat Grip

IPS16 fitting 2 hand rear grip.



Material - EVA

MODEL	I.D	Min O.D	Max O.D	LENGTH	PRICE
EI16D-XA	10mm/13mm- m/15mm	23mm	28mm	100mm	U\$ 5.00



EI16S For IPS16 Reel Seat Grip

IPS16 fitting 1 hand rear grip.



Material - EVA

MODEL	I.D.	Min O.D.	Max O.D.	LENGTH	PRICE
EI16S-XA	10mm/13mm/15mm	23mm	27m	230mm	U\$ 9.00
EI16S-XB	- /13mm/15mm	23mm	27m	230mm	U\$13.00

EI16S-XB Includes WCK27-13 Carbon,W-27U winding check



ES16D For SK16 Reel Seat Grip

SK16 fitting 2 hand rear grip.



ES16D-XA



ES16D-XC



ES16D-XB

Material - EVA

MODEL	I.D.	Min O.D.	Max O.D.	LENGTH	PRICE
ES16D-XA	10mm/13mm/15mm	18mm	27mm	65mm	U\$ 3.50
ES16D-XB	10mm/13mm/15mm	21mm	27mm	65mm	U\$3.50
ES16D-XC	10mm/13mm/15mm	23mm	28mm	60mm	U\$3.50



ES16S For SK16 Reel Seat Grip

SK16 fitting 1 hand rear grip.



ES16S-XA



ES16S-XB

Material - EVA

MODEL	I.D	Min O.D	Max O.D	Length	경도	Price
ES16S-XA	10mm/13mm/15mm	23mm	28mm	195mm	70	U\$ 8.50
ES16S-XB	10mm/13mm/ -	23mm	27.4mm	230mm	70	U\$ 9.00



ES16D-XC

ET16D For TVS16 Reel Seat Grip

TVS16 fitting 2 hand rear grip.



ET16D-XA



ET16D-XB

Material - EVA

MODEL	I.D.	Min O.D	Max O.D	Length	Price
ET16D-XA	10mm/13mm/15mm	20mm	24mm	40mm	U\$ 2.50
EI16D-XB	10mm/13mm	17mm	20mm	40mm	U\$ 2.50



● EVA Grip - Foregrip for DPSM16/ASH and KDPS16

EG Foregrip in front of Reelseats Screw

Simple and short to attache reel seat. You can aply this item when you use DPSM16/ASH. Only 1 size 10mm ID is available.



EG-XA



EG-XB

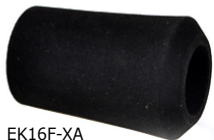
Material - EVA

MODEL	I.D.	Max O.D.	Min.O.D	LENGTH	PRICE
EG-XA36	10mm	21mm	25mm	36mm	U\$ 2.00
EG-XA46	10mm	21mm	25mm	46mm	U\$ 2.50
EG-XB36	10mm	24mm	27mm	36mm	U\$ 2.00
EG-XB46	10mm	24mm	27mm	46mm	U\$ 2.50



EK16F For KDPS16 Reel Seat Grip

It is a essence of grip-design to distinguish from normal rods. KDPS16 is used for quick lock but more meaningful to decorate rods. According to I.D, Various winding checks are applied. All EK16 Series have a hole to fit KDPS16.



EK16F-XA



EK16F-XD



EK16F-XB



EK16F-XE



EK16F-XC



EK16F-XG



EK16F-XH

Material - EVA

MODEL	I.D	Max O.D	LENGTH	PRICE
EK16F-XA	10mm/17mm/21mm	29.5mm	45mm	U\$ 3.00
EK16F-XB	10mm/17mm	25mm	50mm	U\$ 3.00
EK16F-XC	10mm/17mm/21mm	29.5mm	50mm	U\$ 3.00
EK16F-XD	10mm/17mm/21mm	29.5mm	45mm	U\$ 3.00
EK16F-XE	10mm/17mm	29.5mm	45mm	U\$ 3.00
EK16F-XG	21mm	28mm	30mm	U\$ 2.00
EK16F-XH	21mm	27.5mm	22mm	U\$ 1.50



EK16F-XA+S-FR



EK16F-XB+C-MR



EK16F-XC



EK16F-XD+WCK22B



EK16F-XE+C-MR



EK16F-XG

● EVA Grip - General Rear Grip

EF-XA Common Reargrip

General purpose EVA Grip. Usually used for Reargrip.

Material - EVA

MODEL	I.D	Max O.D	Min.O.D	LENGTH	PRICE
EF-XA060	13mm/15mm	27mm	17mm/19mm	60mm	US\$ 3.00
EF-XA085	13mm/15mm	27mm	17mm/19mm	85mm	US\$ 3.50

EF-XA085

EF-XA060



EF-XB Common Reargrip

General purpose EVA Grip. Usually used for Reargrip.

Material - EVA

MODEL	I.D.	Max O.D.	Min.O.D	LENGTH	PRICE
EF-XB085	10mm	28mm	15mm	85mm	US\$ 5.00
EF-XB110	10mm	28mm	15mm	110mm	US\$ 6.50

EF-XB110

EF-XB085



EF-XC Common Reargrip

General purpose EVA Grip. Usually used for Reargrip.

EF-XC060

EF-XC085

EF-XC110



Material - EVA

MODEL	I.D.	Max O.D.	Min.O.D	LENGTH	PRICE
EF-XC060	10mm/13mm/15mm	23.5mm	28mm	60mm	US\$ 3.00
EF-XC085	10mm/13mm/15mm	23.5mm	28mm	85mm	US\$ 3.50
EF-XC110	10mm/13mm/15mm	27mm	20mm	105mm	US\$ 4.00

EF-XD Common Reargrip

General purpose EVA Grip. Usually used for Reargrip.

EF-XD070

EF-XD080

EF-XD110



Material - EVA

MODEL	I.D.	Max O.D.	Min.O.D	LENGTH	PRICE
EF-XD070	10mm/13mm/15mm	27mm	19mm	70mm	US\$ 3.50
EF-XD080	10mm/13mm/15mm	27mm	20mm	80mm	US\$ 4.00
EF-XD110	10mm/13mm/15mm	27mm	20mm	105mm	US\$ 5.00

EF-XD80

EI16D-XA

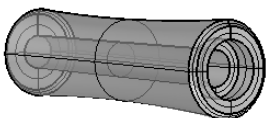


EF-XJ Common Reargrip

General purpose EVA Grip. Usually used for Reargrip. This model has a hole to insert S-MR Series.

Material - EVA, hardness : 70

MODEL	I.D	Max O.D	Min.O.D	LENGTH	PRICE
EF-XJ20	10mm/13mm/15mm	28mm	26mm	20mm	US\$ 1.50
EF-XJ40	10mm/13mm/15mm	28mm	26mm	40mm	US\$ 2.00
EF-XJ60	10mm/13mm/15mm	28mm	265mm	60mm	US\$ 3.00
EF-XJ80	10mm/13mm/15mm	28mm	25mm	80mm	US\$ 3.50
EF-XJ100	10mm/13mm/15mm	28mm	25mm	100mm	US\$ 4.50



One Side Hole for S-MR

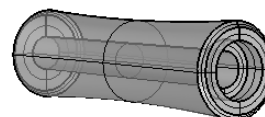
EF-XJ20 EF-XJ40 EF-XJ60 EF-XJ80 EF-XJ100

EF-ZJ Common Reargrip- Hardness 80

General purpose EVA Grip. Usually used for Reargrip. This model has a hole to insert S-MR Series.

Material - EVA, hardness: 80

MODEL	I.D	Max O.D	Min.O.D	LENGTH	PRICE
EF-ZJ20	10mm/13mm/15mm	28mm	26mm	20mm	US\$ 1.80
EF-ZJ40	10mm/13mm/15mm	28mm	26mm	40mm	US\$ 2.40
EF-ZJ60	10mm/13mm/15mm	28mm	265mm	60mm	US\$ 3.60
EF-ZJ80	10mm/13mm/15mm	28mm	25mm	80mm	US\$ 4.20
EF-ZJ100	10mm/13mm/15mm	28mm	25mm	100mm	US\$ 5.40



One Side Hole for S-MR

EF-ZJ20 EF-ZJ40 EF-ZJ60 EF-ZJ80 EF-ZJ100

● EVA Grip - General Rear Grip & Endcap

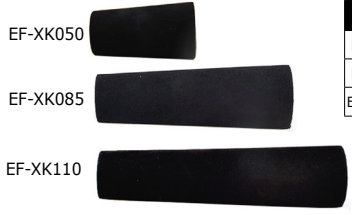
EF-XK

Common Reargrip

General purpose EVA Grip. Usually used for Reargrip.

Material - EVA, Hardness : 70

MODEL	I.D	Max O.D	Min.O.D	Length	Price
EF-XK50	10mm/13mm/15mm	28mm	22mm	50mm	U\$ 2.50
EF-XK85	10mm/13mm/15mm	28mm	22mm	85mm	U\$ 4.00
EF-XK110	10mm/13mm/15mm	28mm	22mm	110mm	U\$ 5.00



EF-ZK

Common Reargrip

General purpose EVA Grip. Usually used for Reargrip.

Material - EVA, Hardness : 80

MODEL	I.D	Max O.D	Min.O.D	Length	Price
EF-ZK50	10mm/13mm/15mm	28mm	22mm	50mm	U\$ 2.50



EF-XM

Common Reargrip

General purpose EVA Grip. Usually used for Reargrip.

Material - EVA

MODEL	I.D	Max O.D	Min.O.D	Length	Price
EF-XM60	10mm/13mm/15mm	28mm	23mm	60mm	U\$ 3.00
EF-XM85	10mm/13mm/15mm	28mm	23mm	85mm	U\$ 3.50
EF-XM110	10mm/13mm/15mm	28mm	23mm	110mm	U\$ 4.50



EE

EVA Reargrip with Rubber Cork (EE-XA/B/C/D)

Reargrip and Endcap are bonded and it can be applied to blanks easily.



Material - EVA

MODEL	I.D	Max O.D	Length	PRICE
EE-XA40	10mm	28.5mm	40mm	U\$ 2.50
EE-XB35	13mm/15mm	27mm	35mm	U\$ 2.50
EE-XC50	13mm/15mm	31mm	50mm	U\$ 3.50



EE-XA40



EE-XC50



EE-XD200

Material - EVA

MODEL	I.D	Min O.D	Max O.D	Length	PRICE
EE-XD200	10mm/13mm/15mm	20mm	28mm	200mm	U\$ 9.00

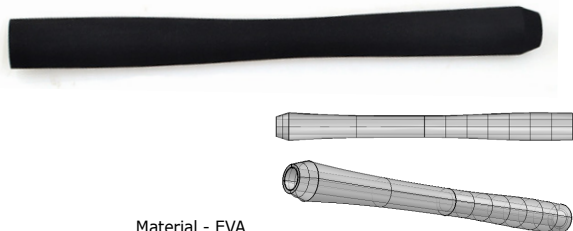


EE-XD200

● EVA Grip - Long & Plain for additional Process

EL-XA Long Tapered Rear Grip

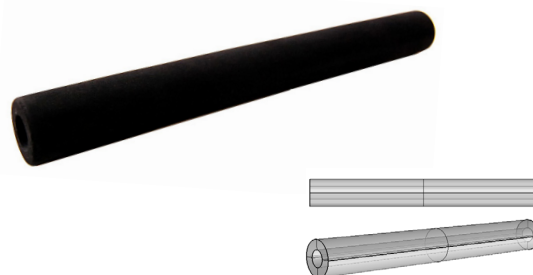
Long (300/400mm) shaped reargrip without nyprocess



Material - EVA

MODEL	I.D	Max O.D	Length	PRICE
EL-XA300	13mm/15mm	27mm	300mm	U\$ 13.00
EL-XA400	13mm/15mm	27mm	400mm	U\$ 17.00

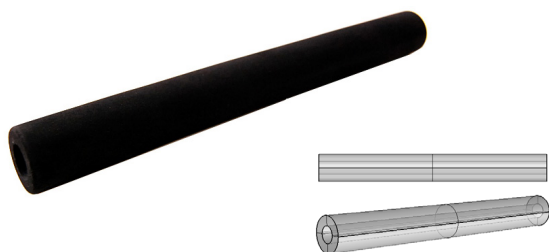
EN25-X450 Plain Grip for processing



Material - EVA

MODEL	I.D	Hardness	Min O.D	Max O.D	Length	PRICE
EN25-X450	10mm/13mm/15mm	70	28mm	28mm	240mm	U\$ 16.00

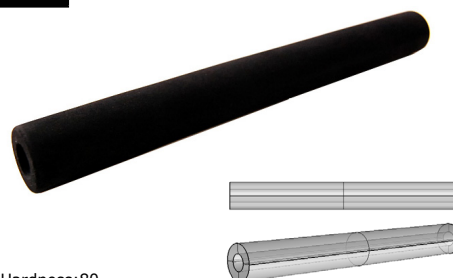
EN28-X240 Plain Grip for processing



Material - EVA, Hardness:70

MODEL	I.D	Hardness	Min O.D	Max O.D	Length	PRICE
EN28-X240	10mm/13mm-15mm	70	28mm	28mm	240mm	U\$ 9.00

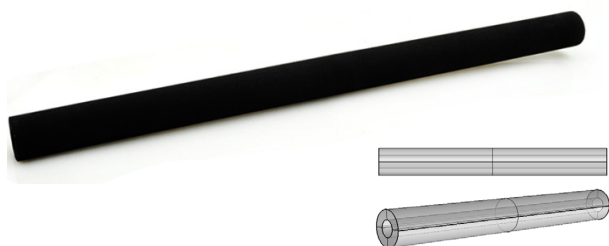
EN28-Z250 Plain Grip for processing



Material - EVA, Hardness:80

MODEL	I.D	Hardness	Min O.D	Max O.D	Length	PRICE
EN28-Z250	10mm/13mm/15mm	80	28mm	28mm	250mm	U\$ 10.00

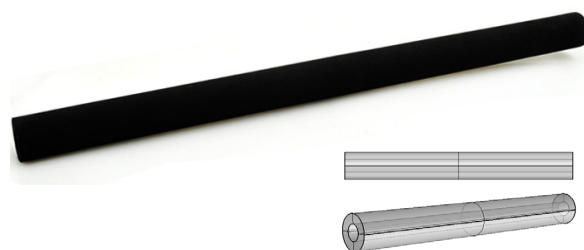
EN27-X450 Plain Long EVA Grip



Material - EVA, Hardness:70

MODEL	Hardness	I.D	Min O.D	Max O.D	Length	PRICE
EN27-X450	70	10mm/13mm/15mm	27mm	27mm	450mm	U\$ 17.00

EN27-Z450 Plain Long EVA Grip



Material - EVA, Hardness:80

MODEL	Hardness	I.D	Min O.D	Max O.D	Length	PRICE
EN27-Z450	80	10mm/13mm/15mm	27mm	27mm	450mm	U\$ 18.00

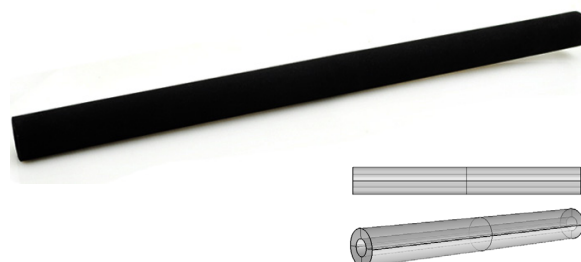
EN28-X450 Plain Long EVA Grip



Material - EVA, Hardness:70

MODEL	Hardness	I.D	Min O.D	Max O.D	Length	PRICE
EN28-X450	70	10mm/13mm/15mm	28mm	28mm	450mm	U\$ 18.00

EN28-Z450 Plain Long EVA Grip



Material - EVA, Hardness:80

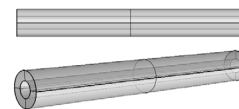
MODEL	Hardness	I.D	Min O.D	Max O.D	Length	PRICE
EN28-Z450	80	10mm/13mm/15mm	28mm	28mm	450mm	U\$ 19.00

- EVA Grip - Plain & Colored Grip for additional Process

EN28-X450 Camo Pattern Long & Plain EVA Grip



- Desert Camo (DC)
- Red Camo(RC)
- Orange Camo (OC)
- Woodland Camo(WC)
- Blue Camo (BC)
- Urban Camo (UC)

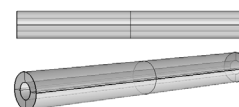
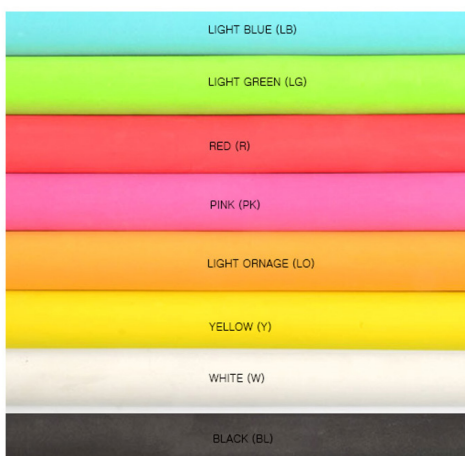


Material - EVA, Hardness:70

MODEL	Color	I.D	Min O.D	Max O.D	Length	PRICE
EN28-X450/DC	Desert Camo	10.0mm/13.2mm/15.2mm	28mm	28mm	450mm	US\$ 20.00
EN28-X450/RC	Red Camo	10.0mm/13.2mm/15.2mm	28mm	28mm	450mm	US\$ 20.00
EN28-X450/OC	Orange Camo	10.0mm/13.2mm/15.2mm	28mm	28mm	450mm	US\$ 20.00
EN28-X450/WC	Woodland Camo	10.0mm/13.2mm/15.2mm	28mm	28mm	450mm	US\$ 20.00
EN28-X450/BC	Blue Camo	10.0mm/13.2mm/15.2mm	28mm	28mm	450mm	US\$ 20.00
EN28-X450/UC	Urban Camo	10.0mm/13.2mm/15.2mm	28mm	28mm	450mm	US\$ 20.00



EN32-X450 Color Long & Plain EVA Grip



Material - EVA, Hardness:70

MODEL	Color	I.D	Min O.D	Max O.D	Length	PRICE
EN32-X450/LB	Light Blue	8.0 /13.0mm	32mm	32mm	450mm	US\$ 20.00
EN32-X450/LG	Light Green	8.0 /13.0mm	32mm	32mm	450mm	US\$ 20.00
EN32-X450/R	Red	8.0 /13.0mm	32mm	32mm	450mm	US\$ 20.00
EN32-X450/PK	Pink	8.0 /13.0mm	32mm	32mm	450mm	US\$ 20.00
EN32-X450/LO	Light Orange	8.0 /13.0mm	32mm	32mm	450mm	US\$ 20.00
EN32-X450/Y	Yellow	8.0 /13.0mm	32mm	32mm	450mm	US\$ 20.00
EN32-X450/W	White	8.0 /13.0mm	32mm	32mm	450mm	US\$ 20.00
EN32-X450/BL	Black	8.0 /13.0mm	32mm	32mm	450mm	US\$ 20.00

● Wood Root Grip - Reel Seats fitting

WAC-16A Wood-Root Bait Reel Seat made of Wood Root

It is imitation of ACS16 trigger part. It can be combined with SK16 Reel Seats. 13mm/15mm I.D. available.



Material - Wood Root

MODEL	I.D	Min O.D	Max.O.D	Length	PRICE
WAC-16A	13mm/15mm	18.0mm	28mm	52mm	US\$ 30.00



WV16D For VSS16 Reel Seat Grip

It is fit into VSS16 exatly. Grip feeling is hard rather than EVA or Cork.



Material - Wood Root

MODEL	I.D	Max O.D	Min.O.D	LENGTH	PRICE
WV16D-AA	13mm	23mm	22m	110mm	US\$ 23.00

WI16D For IPS16 Reel Seat Grip

It is fit into VSS16 exatly. Grip feeling is hard rather than EVA or Cork.



Material - Wood Root

MODEL	I.D	Max O.D	Min.O.D	LENGTH	PRICE
WI16D-AA	15mm	27mm	23.2mm	100mm	US\$ 23.00



WS16D FOR SK16 Reel Seat Grip

This is general end cap with rubber cushion. Diameter of insert part is 22mm



WS16D-AA

Material - Wood Root

MODEL	I.D	Max O.D	Min.O.D	LENGTH	PRICE
WS16D-AA	13mm/15mm	27mm	22m	65mm	US\$ 11.00
WS16D-AB	13mm/15mm	27mm	22m	65mm	US\$ 11.00



WS16D-AB



WS16D-AA

WK16F For KSKSS16/ASH Reel Seat Grip

This is general end cap with rubber cushion. Diameter of insert part is 7m



WK16F-AA

Material - Wood Root

MODEL	I.D	Max O.D	Min.O.D	LENGTH	PRICE
WK16F-AA	10mm/17mm/21mm	29.4mm	25m	45mm	US\$ 9.00
WK16F-AD	10mm/17mm/21mm	29.4mm	25m	45mm	US\$ 9.00



WK16F-AD



● Wood Root Grip - Reel Seats fitting

WF-AC

Common Rear Grip



Material - Wood Root

MODEL	I.D	Min O.D	Max.O.D	Length	PRICE
WF-AC060	13mm/15mm	20.5mm	27mm	60mm	U\$ 10.00
WF-AC085	13mm/15mm	20.5mm	27mm	85mm	U\$ 14.00
WF-AC100	13mm/15mm	20.5mm	27mm	100mm	U\$ 17.00



WF-AC100 WF-AC080 WF-AC060



WF-AD

Common Rear Grip



Material - Wood Root

MODEL	I.D	Min O.D	Max.O.D	Length	PRICE
WF-AD060	13mm/15mm	19.5mm	27mm	60mm	U\$ 10.00
WF-AD085	13mm/15mm	19.5mm	27mm	85mm	U\$ 14.00
WF-AD105	13mm/15mm	19.5mm	27mm	105mm	U\$ 17.00



WF-AD060 WF-AD080 WF-AD100

WF-AS128

Reargrip for ACS16/ECS16/TCS16



Material - Wood Root

MODEL	I.D	Max O.D	LENGTH	PRICE
WF-AS128	13mm/15mm	28.5mm	128mm	U\$ 48.00



● Top Guide

All specification will be updated. with diagram soon.

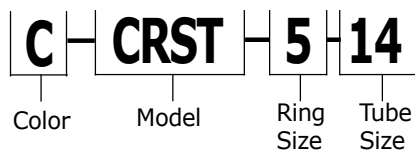
There are 4 colors (Gunsmoke, Chrome, Gold, Aurora)

Color code is as below;

Gunsmoke : No Marking
 Chromne : C
 Gold : G
 Aurora : AU

Ring Size means O.D. of ring and Tube I.D means I.D of tube.

Tip-Top Sizing



CRST



Ring Material : Silicon Carbide Ring(SIC)
 Frame Material : Stainless Steel (SS)
 Available Colors : G/Smoke (GS) Chrome (C) Gold (G) Aurora (AU)

GUN-SMOKE	CHROME	GOLD	AURORA	Ring Size(mm)	Tube Size(mm)	PRICE
CRST-514	CCRST-514	GCRST-514	AUCRST-514	5	1.4	U\$ 3.00
CRST-516	CCRST-516	GCRST-516	AUCRST-516	5	1.6	U\$ 3.00
CRST-518	CCRST-518	GCRST-518	AUCRST-518	5	1.8	U\$ 3.00
CRST-520	CCRST-520	GCRST-520	AUCRST-520	5	2.0	U\$ 3.00
CRST-522	CCRST-522	GCRST-522	AUCRST-522	5	2.2	U\$ 3.00
CRST-524	CCRST-524	GCRST-524	AUCRST-524	5	2.4	U\$ 3.00
CRST-614	CCRST-614	GCRST-614	AUCRST-614	6	1.4	U\$ 3.00
CRST-616	CCRST-616	GCRST-616	AUCRST-616	6	1.6	U\$ 3.00
CRST-618	CCRST-618	GCRST-618	AUCRST-618	6	1.8	U\$ 3.00
CRST-620	CCRST-620	GCRST-620	AUCRST-620	6	2.0	U\$ 3.00
CRST-622	CCRST-622	GCRST-622	AUCRST-622	6	2.2	U\$ 3.00
CRST-624	CCRST-624	GCRST-624	AUCRST-624	6	2.4	U\$ 3.00

FST



Ring Material : Silicon Carbide Ring(SIC)
 Frame Material : Stainless Steel (SS)
 Available Colors : G/Smoke (GS) Chrome (C) Gold (G) Aurora (AU)

GUN-SMOKE	CHROME	GOLD	AURORA	Ring size(mm)	Tube Size(mm)	PRICE
FST-514	CFST-514	GFST-514	AUFST-514	5	1.4	U\$ 3.00
FST-516	CFST-516	GFST-516	AUFST-516	5	1.6	U\$ 3.00
FST-518	CFST-518	GFST-518	AUFST-518	5	1.8	U\$ 3.00
FST-520	CFST-520	GFST-520	AUFST-520	5	2.0	U\$ 3.00
FST-522	CFST-522	GFST-522	AUFST-522	5	2.2	U\$ 3.00
FST-524	CFST-524	GFST-524	AUFST-524	5	2.4	U\$ 3.00

LNST



Ring Material : Silicon Carbide Ring(SIC)
 Frame Material : Stainless Steel (SS)
 Available Colors : G/Smoke (GS) Chrome (C) Gold (G) Aurora (AU)

GUN-SMOKE	CHROME	GOLD	AURORA	Ring Size(mm)	Tube Size(mm)	PRICE
LNST-518	CLNST-518	GLNST-518	AULNST-518	5	1.6	U\$ 3.00
LNST-520	CLNST-520	GLNST-520	AULNST-520	5	1.8	U\$ 3.00
LNST-520	CLNST-520	GLNST-520	AULNST-520	5	2.0	U\$ 3.00
LNST-522	CLNST-522	GLNST-522	AULNST-522	5	2.2	U\$ 3.00
LNST-524	CLNST-524	GLNST-524	AULNST-524	5	2.4	U\$ 3.00
LNST-526	CLNST-526	GLNST-526	AULNST-526	5	2.6	U\$ 3.00
LNST-616	CLNST-616	GLNST-616	AULNST-616	6	1.6	U\$ 3.00
LNST-618	CLNST-618	GLNST-618	AULNST-618	6	1.8	U\$ 3.00
LNST-620	CLNST-620	GLNST-620	AULNST-620	6	2.0	U\$ 3.00
LNST-622	CLNST-622	GLNST-622	AULNST-622	6	2.2	U\$ 3.00
LNST-624	CLNST-624	GLNST-624	AULNST-624	6	2.4	U\$ 3.00
LNST-626	CLNST-626	GLNST-626	AULNST-626	6	2.6	U\$ 3.00

LST



Ring Material : Silicon Carbide Ring(SIC)
 Frame Material : Stainless Steel (SS)
 Available Colors : G/Smoke (GS) Chrome (C) Gold (G) Aurora (AU)

GUNSMOKE	CHROME	GOLD	AURORA	Ring Size(mm)	Tube Size(mm)	PRICE
LST-514	CLST-514	GLST-514	AULST-514	5	1.4	U\$ 2.80
LST-516	CLST-516	GLST-516	AULST-516	5	1.6	U\$ 2.80
LST-518	CLST-518	GLST-518	AULST-518	5	1.8	U\$ 2.80
LST-520	CLST-520	GLST-520	AULST-520	5	2.0	U\$ 2.80
LST-522	CLST-522	GLST-522	AULST-522	5	2.2	U\$ 2.80
LST-524	CLST-524	GLST-524	AULST-524	5	2.4	U\$ 2.80

● **Top Guide & Running Guides**

BST



Ring Material : Silicon Carbide Ring(SIC)
 Frame Material : Stainless Steel (SS)
 Available Colors : G/Smoke Chrome (GS) Chrome (C) Gold (G) Aurora (AU)

GUNSMOKE	CHROME	GOLD	AURORA	Ring Size(mm)	Tube Size(mm)	PRICE
CBST-308	CBST-308	CBST-308	CBST-308	3	0.8	U\$ 2.50
CBST-310	CBST-310	CBST-310	CBST-310	3	1.0	U\$ 2.50
CBST-312	CBST-312	CBST-312	CBST-312	3	1.2	U\$ 2.50

FWT



Frame Material : Stainless Steel (SS)
 Available Colors : G/Smoke Chrome (GS) Chrome (C) Gold (G) Aurora (AU)

GUNSMOKE	CHROME	GOLD	AURORA	Ring Size(mm)	Tube Size(mm)	PRICE
FWT-622	CFWT-622	GFWT-622	AUFWT-622	5.9	2.2	U\$ 2.80
FWT-824	CFWT-824	GFWT-824	AUFWT-824	85	2.4	U\$ 2.80

WLST



Ring Material : Silicon Carbide Ring(SIC)
 Frame Material : Stainless Steel (SS)
 Available Colors : G/Smoke Chrome (GS) Chrome (C) Gold (G) Aurora (AU)

GUN-SMOKE	CHROME	GOLD	AURORA	Ring Size(mm)	Tube Size(mm)	PRICE
WLST-414	CWLST-414	GWLST-514	AUWLST-514	4	1.4	U\$ 2.80
WLST-416	CWLST-416	GWLST-516	AUWLST-516	4	1.6	U\$ 2.80
WLST-418	CWLST-418	GWLST-518	AUWLST-518	4	1.8	U\$ 2.80

WST



Ring Material : Silicon Carbide Ring(SIC)
 Frame Material : Stainless Steel (SS)
 Available Colors : G/Smoke Chrome (GS) Chrome (C)

GUN-SMOKE	CHROME	Ring Size(mm)	Tube Size(mm)	PRICE
WST-524	CWST-524	5	2.4	U\$ 4.90
WST-528	CWST-528	5	2.8	U\$ 4.90
WST-532	CWST-532	5	3.2	U\$ 4.90
WST-536	CWST-536	5	3.6	U\$ 4.90

● **Running Guide**

WSG



Ring Material : Silicon Carbide Ring(SIC)
 Frame Material : Stainless Steel (SS)
 Available Colors : G/Smoke Chrome (GS) Chrome (C) Gold (G) Aurora (AU)

GUNSMOKE	CHROME	GOLD	AURORA	Ring I.D(mm)	Ring O.D(mm)	PRICE
WSG-4	CWSG-04	GWSG-04	AUWSG-04	2.4	4.0	U\$ 2.80
WSG-5	CWSG-05	GWSG-05	AUWSG-05	3	5.0	U\$ 2.80
WSG-5.5	CWSG-5.5	GWSG-5.5	AUWSG-5.5	3.2	5.5	U\$ 2.80
WSG-6	CWSG-06	GWSG-06	AUWSG-06	4.1	6.0	U\$ 2.80
WSG-7	CWSG-07	GWSG-07	AUWSG-07	4.9	7.0	U\$ 2.80
WSG-8	CWSG-08	GWSG-08	AUWSG-08	5.9	8.0	U\$ 2.80

KBSG



Ring Material : Silicon Carbide Ring(SIC)
 Frame Material : Stainless Steel (SS)
 Available Colors : G/Smoke Chrome (GS) Chrome (C) Gold (G) Aurora (AU)

GUN-SMOKE	CHROME	GOLD	AURORA	Ring I.D Size(mm)	Ring O.D Size(mm)	PRICE
KBSG-4	KBSG-4	KBSG-4	KBSG-4	2.1	4.0	U\$ 3.00
KBSG-5	KBSG-5	KBSG-5	KBSG-5	2.8	5.0	U\$ 3.00
KBSG-5.5	KBSG-5.5	KBSG-5.5	KBSG-5.5	3.0	5.5	U\$ 3.00
KBSG-6	KBSG-6	KBSG-6	KBSG-6	4.0	6.0	U\$ 3.00

LDBSG



Ring Material : Silicon Carbide Ring(SIC)
 Frame Material : Stainless Steel (SS)
 Available Colors : G/Smoke Chrome (GS) Chrome (C) Gold (G) Aurora (AU)

GUNSMOKE	CHROME	GOLD	AURORA	Ring I.D(mm)	Ring O.D(mm)	PRICE
LDBSG-4	CWSG-04	GWSG-04	AUWSG-04	2.5	4.0	U\$ 3.00
LDBSG-5	CWSG-05	GWSG-05	AUWSG-05	3	5.0	U\$ 3.00
LDBSG-5.5	CWSG-5.5	GWSG-5.5	AUWSG-5.5	3.8	5.5	U\$ 3.00
LDBSG-6	CWSG-06	GWSG-06	AUWSG-06	4.0	6.0	U\$ 3.00
LDBSG-8	CWSG-08	GWSG-08	AUWSG-08	5.0	8.0	U\$ 3.50

● **Single & Double Foot Guide**

● **Single Foot Guide**

HSG



Ring Material : Silicon Carbide Ring(SIC)
 Frame Material : Stainless Steel (SS)
 Available Colors :

GUNSMOKE	CHROME	GOLD	AURORA	Ring I.D Size(mm)	Ring O.D Size(mm)	PRICE
HSG-4	CHSG-4	GHSG-4	AUHSG-4	2.1	3.9	U\$ 2.30
HSG-5	CHSG-5	GHSG-5	AUHSG-5	2.8	4.9	U\$ 2.40
HSG-6	CHSG-6	GHSG-6	AUHSG-6	3.9	6.1	U\$ 2.50
HSG-8	CHSG-8	GHSG-8	AUHSG-8	5.2	8.0	U\$ 3.00
HSG-10	CHSG-10	GHSG-10	AUHSG-10	6.8	9.9	U\$ 3.40
HSG-12	CHSG-12	GHSG-12	AUHSG-12	8.2	11.8	U\$ 4.10
HSG-16	CHSG-16	GHSG-16	AUHSG-16	10.6	14.7	U\$ 4.90
HSG-20	CHSG-20	GHSG-20	AUHSG-20	14.0	18.8	U\$ 5.90

SSG



Ring Material : Silicon Carbide Ring(SIC)
 Frame Material : Stainless Steel (SS)
 Available Colors :

GUNSMOKE	CHROME	GOLD	AURORA	Ring I.D Size(mm)	Ring O.D Size(mm)	PRICE
SSG-6	CSSG-6	GSSG-6	AUSSG-6	4.0	6.0	U\$ 2.50
SSG-8	CSSG-8	GSSG-8	AUSSG-8	5.9	8.0	U\$ 2.90
SSG-10	CSSG-10	GSSG-10	AUSSG-10	6.9	9.0	U\$ 3.10
SSG-12	CSSG-12	GSSG-12	AUSSG-12	8.5	12.0	U\$ 3.30
SSG-16	CSSG-16	GSSG-16	AUSSG-16	10.8	16.0	U\$ 4.20
SSG-20	CSSG-20	GSSG-20	AUSSG-20	14.5	20.0	U\$ 5.20
SSG-25	CSSG-25	GSSG-25	AUSSG-25	18.3	23.5	U\$ 7.20
SSG-30	CSSG-30	GSSG-30	AUSSG-30	23.2	30.0	U\$ 9.60

● **Double Foot Guide**

CRSG



Ring Material : Silicon Carbide Ring(SIC)
 Frame Material : Stainless Steel (SS)
 Available Colors :

GUNSMOKE	CHROME	GOLD	AURORA	Ring Size(mm)	Tube Size(mm)	PRICE
CRSG-06	CCRS-06	GCRSG-06	AUCRS-06	3.7	6.0	U\$ 2.80
CRSG-08	CCRS-08	GCRSG-08	AUCRS-08	5.2	8.0	U\$ 3.30
CRSG-10	CCRS-10	GCRSG-10	AUCRS-10	6.9	10.0	U\$ 3.90
CRSG-12	CCRS-12	GCRSG-12	AUCRS-12	8.1	11.6	U\$ 5.00
CRSG-12H	CCRS-12H	GCRSG-12H	AUCRS-12H	8.1	11.6	U\$ 6.00
CRSG-16	CCRS-16	GCRSG-16	AUCRS-16	10.5	15.0	U\$ 8.20
CRSG-16H	CCRS-16H	GCRSG-16H	AUCRS-16H	9	15.0	U\$ 10.40

WNSG



Ring Material : Silicon Carbide Ring(SIC)
 Frame Material : Stainless Steel (SS)
 Available Colors :

GUNSMOKE	CHROME	GOLD	AURORA	Ring I.D(mm)	Ring O.D(mm)	PRICE
WNSG-06	CWNSG-06	GWNSG-06	AUWNSG-06	3.9	6.1	U\$ 3.00
WNSG-07	CWNSG-07	GWNSG-07	AUWNSG-07	4.7	6.9	U\$ 3.00
WNSG-08	CWNSG-08	GWNSG-08	AUWNSG-08	5.8	8.1	U\$ 3.00
WNSG-10	CWNSG-10	GWNSG-10	AUWNSG-10	7.8	10.0	U\$ 3.50
WNSG-12	CWNSG-12	GWNSG-12	AUWNSG-12	9.1	12.0	U\$ 4.00
WNSG-16	CWNSG-16	GWNSG-16	AUWNSG-16	10.6	14.4	U\$ 4.80

KWSG



Ring Material : Silicon Carbide Ring(SIC)
 Frame Material : Stainless Steel (SS)
 Available Colors :

GUNSMOKE	CHROME	GOLD	AURORA	Ring I.D(mm)	Ring O.D(mm)	PRICE
KWSG-08	CKWSG-08	GKWSG-08	AUKWSG-08	5.4	8.2	U\$ 3.40
KWSG-10	CKWSG-10	GKWSG-10	AUKWSG-10	6.8	10.0	U\$ 3.80
KWSG-12	CKWSG-12	GKWSG-12	AUKWSG-12	8.2	12.0	U\$ 4.90

RBSG



Ring Material : Silicon Carbide Ring(SIC)
 Frame Material : Stainless Steel (SS)
 Available Colors :

GUNSMOKE	CHROME	GOLD	AURORA	Ring I.D(mm)	Ring O.D(mm)	PRICE
RBSG-08	CRBSG-08	GRBSG-08	AURBSG-08	5.9	8.0	U\$ 2.80
RBSG-10	CRBSG-10	GRBSG-10	AURBSG-10	7.4	10.0	U\$ 3.10
RBSG-12	CRBSG-12	GRBSG-12	AURBSG-12	9.1	12.0	U\$ 3.30
RBSG-16	CRBSG-16	GRBSG-16	AURBSG-16	11.7	15.0	U\$ 3.80
RBSG-20	CRBSG-20	GRBSG-20	AURBSG-20	14.9	20.0	U\$ 5.10
RBSG-25	CRBSG-25	GRBSG-25	AURBSG-25	19.4	25.0	U\$ 6.40
RBSG-30	CRBSG-30	GRBSG-30	AURBSG-30	24.7	30.0	U\$ 9.40
RBSG-40	CRBSG-40	GRBSG-40	AURBSG-40	29.6	40.0	U\$ 12.80

● Special Guide & Hook Keeper

● Braided Line Guide

DBSG



Ring Material : Silicon Carbide Ring(SIC)
 Frame Material : Stainless Steel (SS)
 Available Colors :

GUNSMOKE	CHROME	GOLD	AUROORA	Ring I.D.(mm)	Ring O.D.(mm)	PRICE
DBSG-5	CDBSG-5	GDBSG-5	AUDBSG-5	5.5	8.3	U\$ 4.30
DBSG-5.5	CDBSG-5.5	GDBSG-5.5	AUDBSG-5.5	6	9.2	U\$ 4.80
DBSG-6	CDBSG-6	GDBSG-6	AUDBSG-6	7.2	10.7	U\$ 5.50

WDBSG



Ring Material : Silicon Carbide Ring(SIC)
 Frame Material : Stainless Steel (SS)
 Available Colors :

GUNSMOKE	CHROME	Ring I.D (mm) Long Side	PRICE
WDBSG-06	CWDBSG-06	6.0	U\$ 8.00
WDBSG-08	CWDBSG-08	8.0	U\$ 9.00
WDBSG-10	CWDBSG-10	10.0	U\$ 10.00

● FLY & Coil Guide

FSG



Frame Material : Stainless Steel (SS)
 Available Colors :

GUNSMOKE	CHROME	GOLD	AUROORA	Ring I.D Size(mm)	Ring O.D Size(mm)	PRICE
FSG-6	CFSG-6	GFSG-6	AUFSG-6	6.1	3.9	U\$ 2.00
FSG-7	CFSG-7	GFSG-7	AUFSG-7	7.1	4.9	U\$ 2.00
FSG-8	CFSG-8	GFSG-8	AUFSG-8	8.0	6.1	U\$ 2.00
FSG-9	CFSG-9	GFSG-9	AUFSG-9	9.0	8.0	U\$ 2.00

WGA



Frame Material : Stainless Steel (SS)
 Available Colors :

GUNSMOKE	CHROME	Ring I.D Size(mm)	PRICE
WGA-8	CWGA-8	8.0	U\$ 3.20
WGA-10	CWGA-10	10.0	U\$ 3.40
WGA-12	CWGA-12	12.0	U\$ 3.60
WGA-16	CWGA-16	16.0	U\$ 3.90
WGA-20	CWGA-20	20.0	U\$ 4.40

● Hook Keeper

WK



CK



ZK



RK



Frame Material : Stainless Steel (SS)
 Available Colors :

Frame Material : Stainless Steel (SS)
 Available Colors :

Frame Material : Stainless Steel (SS)
 Available Colors :

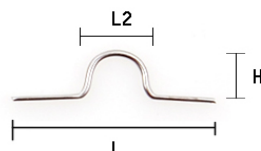
Frame Material : Stainless Steel (SS)
 Available Colors :

MODEL	COLOR	L (mm)	H (mm)	PRICE
WK-GS	Gunsmoke	4.2	5.0	U\$ 1.50
WK-C	Chrome	4.2	5.0	U\$ 1.50
WK-G	Gold	4.2	5.0	U\$ 1.50
WK-AU	Aurora	4.2	5.0	U\$ 1.50

MODEL	L (mm)	L2 (mm)	H (mm)	PRICE
CK05	19.0	5.0	3.5	U\$ 0.50
CK06	19.0	6.0	4.0	U\$ 0.50
CK07	19.0	7.0	4.0	U\$ 0.50

MODEL	COLOR	L (mm)	Foot Length(mm)	H (mm)	PRICE
ZK-GS	Gunsmoke	13.0	7.0	8.0	U\$ 1.50
ZK-C	Chrome	13.0	7.0	8.0	U\$ 1.50
ZK-G	Gold	13.0	7.0	8.0	U\$ 1.50
ZK-AU	Aurora	13.0	7.0	8.0	U\$ 1.50

MODEL	COLOR	L (mm)	Foot Length(mm)	H (mm)	PRICE
RK-GS	Gunsmoke	15	8	5	U\$ 1.00
RK-C	Chrome	15	8	5	U\$ 1.00
RK-G	Gold	15	8	5	U\$ 1.00
RK-AU	Aurora	15	8	5	U\$ 1.00



Wrapping Threads

● Wrapping Threads Kit

WK-001 Wrapping Thread 12 Kit (Mixed)

Best selection Rod builder prefers!



MODEL	TYPE	Length	PRICE
WK-001	D	100yds	U\$38.40

- ZTON Metallic (4) : • MT-201 • MT-202 • MT-203 • MT-205
 Metallic D (4) : • 9480 D Blue • 9300 D Red • 9860 D Silver • 9100 D Yellow
 Nylon A (4) : • 343A Burgandy • 813A Gunsmoke • 862A Black(2)

WK-002/003 Nylon Wrapping Thread 12 Kit

Recommended Nylon Thread colors, "A" size and "D" 100yd, 12ea Spool



MODEL	TYPE	Length	PRICE
WK-002	NYLONE A	100yds	U\$32.40
WK-003	NYLONE D	100yds	U\$32.40

- 206 Burt Orange • 316 Raspberry • 343 Burgandy • 446 Regal Blue
 • 561 Desert Camo • 607 Lilac • 704 Midas Gold • 807 White
 • 831 Smoke Screen • 862 Black (3)

WK-004/005 Metallic Wrapping Thread 12 Kit

Recommended Metallic Thread colors, "A" size and "D" 100yd, 12ea Spool



MODEL	TYPE	Length	PRICE
WK-004	Metallic A	100yds	U\$38.40
WK-005	Metallic D	100yds	U\$38.40

- 9100 Yellow (2) • 9130 Gold • 9300 Red (2)
 • 9480 Blue • 9630 Lanvender • 9710 Copper
 • 9850 Blue Steel • 9820 Gunsmoke • 9860 Silver (2)

WK-006/007 NCP Nylon Wrapping Thread 12 Kit

Recommended NCP Thread colors, "A" size and "D" 100yd, 12ea Spool



MODEL	TYPE	Length	PRICE
WK-006	NCP A	100yds	U\$38.40
WK-007	NCP D	100yds	U\$38.40



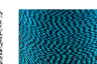

- NCP 110 BananaSplit • NCP 216 Tangerine • NCP 316 Raspberry
 • NCP 343 Burgandy • NCP 446 Regal Bluet • NCP 704 Midas Gold
 • NCP 807 White • NCP 813 Silver Shiner • NCP 831 Smoke Silver
 • NCP 862 Black (3)

WK-008 2Tone Metallic Thread 8 Kit

The most popular 2 tone Metallic Threads Assortment (8ea, 4 colors X 2ea)



MODEL	TYPE	Length	Q'ty	PRICE
WK-008	D	100yds	8 pcs	U\$28.80

-  **MT201** (Gold Metallic +Black)
 **MT202** (Silver Metallic+Black)
 **MT203** (Blue Metallic (Gold Metallic +Red) +Black)
 **MT204**

WK-009 NYLON "D" Wrapping Thread 12 Kit

Recommended Nylon Thread colors, "D" Size 100yd, 12ea Spool



MODEL	TYPE	Length	Q'ty	PRICE
WK-009	Nylon D	100yds	12 pcs	U\$32.40

- 119 D Taxi CAP (1) • 301 D Bubblegum(1) • 343 D Burgandy(1)
 • 449 D Wild Blue Berry (1) • 501 D Kiwi (1) • 561 D Desert Camo
 • 601 D Pale Lavender • 815 D Light Beige • 831 D Smoke Screen (1)
 • 862 Black (3)

● Wrapping Threads

FY/FC Fine Color Wrapping Thread (100yd)

Fine Color threads is clean and distinguished when wrapped. "A"/"D" sizes and Nylone/ NCP are available.



MODEL	TYPE	Length	Color	PRICE
FYA-(Color)	Nylone A	100yds	3	U\$3.50
FYD-(Color)	Nylone D	100yds	3	U\$3.50
FCA-(Color)	NCP A	100yds	3	U\$4.50
FCD-(Color)	NCP D	100yds	3	U\$4.50



101-Chartreuse



102-Orange



103-Pink

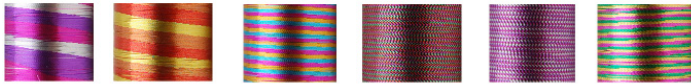
MC

Multi-Color Thread (100yd)

Multi-Color Meallic "A" threads is excellent in decoration rods. Only "A" size thread is available.



MODEL	TYPE	Length	Color	PRICE
MC-(Color)	Metallic A	100yds	6	U\$5.50



MC101 (Red+Violet+Silver) **MC102** (Orange+Yellow) **MC103** (Blue+Red+Orange) **MC104** (Red+Green) **MC105** (Violet+Silver) **MC106** (Green+Yellow+Red)

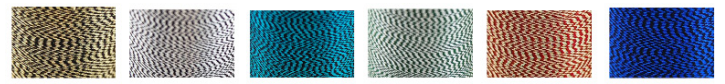
MT

Metalic 2-Tone Color Thread (100yd)

Multi-Color Meallic "A" threads is excellent in decoration rods. Only "A" size thread is available.



MODEL	TYPE	Length	Color	PRICE
MT-(Color)	Metallic D	100yds	6	U\$5.00



MT201 (Gold +Black) **MT202** (Silver+Black) **MT203** (Light Blue+Black) **MT204** (Silver+Green) **MT205** (Gold+Red) **MT206** (Blue+Black)

MR

Metallic Wrapping Thread (100YDS)

Best selection among the so many Meallic. 12 colors, "A", "D" Sizes are available.



MODEL	TYPE	Length	Color	PRICE
MRA	Metallic A	100yds	12	U\$4.00
MRD	Metallic D	100yds	12	U\$4.00



9100 Yellow Gold 9130 Gold 9160 Plae Gold 9300 Red



9480 Blue 9510 Lime 9630 Lavender 9710 Copper



9820 Gunsmoke 9850 Blue Steel 9860 Silver 9880 Pearl



Jig System & Cork Ring

● Cork Ring & Jig

Natural Cork

High-End Pure Cork Ring for Rod Grip



CR32-13/E CR32-13/A

Material - CORK

MODEL	GRADE	I.D.	O.D	Thickness	PRICE
CR32-13/E	Extra	6mm	32mm	13mm	U\$ 2.00
CR32-13/A	A	6mm	32mm	13mm	U\$ 1.00

Burl Cork Ring

Light color Burl Cork to make it easy to make long Grip.



BC32-20/L BC32-20/M

Material - CORK

MODEL	I.D.	O.D	Thickness	PRICE
BC32-20/L	10mm	32mm	20mm	U\$ 1.20
BC32-20/M	10mm	32mm	20mm	U\$ 1.20

Check Pattern Cork Ring

Hand-made Check pattern Cork Ring



Material - CORK

MODEL	I.D.	O.D	Thickness	PRICE
CK32-13	6mm	32mm	13mm	U\$ 3.00

Cactus Cork Ring



CR32-13/A CCR32-13/B

Material - CORK

MODEL	I.D.	O.D	Thickness	PRICE
CR32-13A	6mm	32mm	13mm	U\$ 1.80
CR32-13B	6mm	32mm	13mm	U\$ 1.80

Color Burl Cork Ring



BL32-13/B (Blue) BL32-13/GR (Green)
BL32-13/BR (Brown) BL32-13/R (Red)

Material - CORK

MODEL	GRADE	I.D.	O.D	Thickness	PRICE
BL32-13/B	Blue	6mm	32mm	13mm	U\$ 1.00
BL32-13/GR	Green	6mm	32mm	13mm	U\$ 1.00
BL32-13/BR	Brown	6mm	32mm	13mm	U\$ 1.00
BL32-13/R	Red	6mm	32mm	13mm	U\$ 1.00

Burnt Cork Ring



BT32-13/N BT32-13/MW
BT32-13/MB BT32-13/B

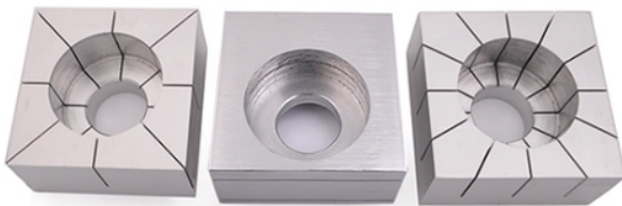
Material - CORK

MODEL	GRADE	I.D.	O.D	Thickness	PRICE
BT32-N	Natural	6mm	32mm	13mm	U\$ 1.00
BT32-MW	Mix White	6mm	32mm	13mm	U\$ 1.00
BT32-MB	Mix Burnt	6mm	32mm	13mm	U\$ 1.00
BT32-B	Burnt	6mm	32mm	13mm	U\$ 1.00

CRS

Cork Ring Slicing Jigs

Creative Rod design comes from hand-made Cork and EVA. These 3 jigs will assist you to make your own Rod Handle. You can slice 32mm Cork and EVA disc into 30 degree and 45 degree, not to speak of half slicing. As it is rectangular, easy to handle slicing Cork/EVA disks.



CRS45 CRSH CRS30

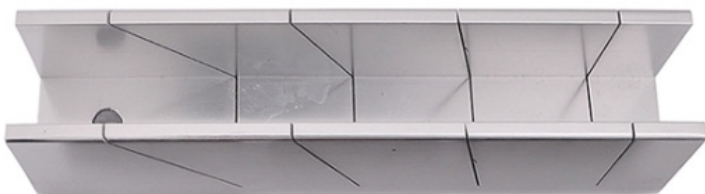
- MATERIAL : ALUMINUM / 0.5mm Cutting

MODEL	Length	PRICE
CRSH	Slice Jig	U\$ 26.00
CRS45	8-Slice	U\$ 26.00
CRS30	12-Slice	U\$ 32.00

VJB

Cork/EVA Cutting Jig

It seems very easy to cut down Cork/EVA vertically. But it is very difficult correctly to attach vertically cutting EVA/Cork rods. This cutting Jig makes 28mm Thickness EVA/ Cork cut exactly. 30 / 45 / 60 degree cutting can be done easily.



- MATERIAL : ALUMINUM / 0.5mm Cutting

MODEL	DESCRIPTION	PRICE
VJB	Cutting Jig	U\$ 30.00

● Cork Ring Work Accessory

CSS Cork Jig Saw w/50cm(20") Blades

The blades' superfine cutting teeth (less 0.5mm) reduce Cork/EVA disk loss. It can be worked with Jig System. Blade Saw 100cm included.



MODEL	PRICE
CSS	U\$ 15.00

CSS-BL 100cm(39") Blades for Cork Jig Saw

Cork/EVA Saw(CSS) replacement wire Blades

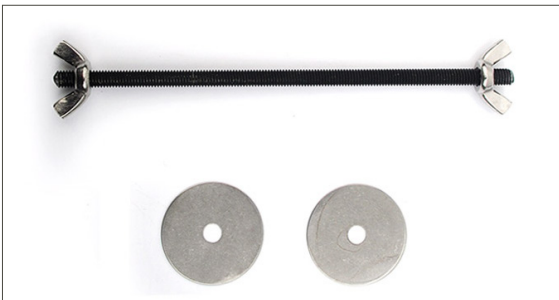


MODEL	Length	PRICE
CSS-BL	100cm	U\$ 5.00

CCP Mini Cork Ring Clamp

Simple & Short Accessry to compress Cork Rings

MODEL	Length	PRICE
CCP	20cm	U\$ 3.00



● Multi-Function T-System(TMSA, Dryer & Hand Wrapper)

T SYSTEM

JADRAK
KOREA



T-System is under processing to be compatible all of tools which are essential in rodbuilding
TMSA kit is one-stop utility in drying and wrapping.

MODEL	Function	Voltage	PRICE
TMSA-220	Drying & Hand Wrapping	220V	U\$160.00
TMSA-110	Drying & Hand Wrapping	110V	U\$160.00

Characteristics

T-System is designed to be compatible, connected and easily upgraded.

Customer choose according to their needs and upgrade part by part to make automatic wrapping system or Epoxy mixer. T-System saves your money and space.

1. Aluminum Base Station (TAP)

Lightweight and well- finished base Station can be connted by connectors (TCN). Cutting edge is exact and TCN make it seems 1pcs body. It is simple to make 1.6m or 2.4m staion for 1pcs rod. Just connect with TCN. If you need minor extentioni or stand-alone small base station, you can use TAP150 (150mm length station). It is also connected to TAP800/TAP150 easily. TAP has 5 rails to accomodate all needs of rod builder. Main 3 rails on the center of Station makes it possible to install all compatible T-System tools.

2. Dry Motor Kit (MAK)

Stand- Alone kit is convient to adjust the distance from Hand wrapper when fisnishing wrapping. You don't have to move the rods anymore. If you need connect it to main station(TAP800), you can also easily attach with TCN. Furthermore, it can be moved to opposite side for left-hander.

3. Supporter (TVS)

It does not occupy space at all. And 3ea bearing roller are installed to make it smooth and enable high-speed wrapping motor to be compatible. It means you don't have to pay more if you upgrade motor.

4. Tensioner (TTA)

Its sliding is smooth as 4ea bearing roller moves slider rail. It does not interact with stand-alone Stand (Under developing) and Supporter at all. Its rail is seperated with main 3 rails. It can be upgraded with 3 spool and 4 spool tensioner (Under developing) easily.

Component

Jadruk Dry Motor Kit (MKA)



Jadruk Base Station (TAP800)



Jadruk Supporter (TVS)

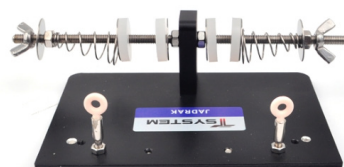


Jadruk Dry Motor (JSM18-220/110)

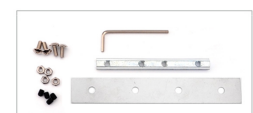


- Motor is included in MKA kit.
- 110/220V motors are available

Jadruk Tensioner (TTA)



Jadruk Connector (TCN)





COMPONENTS

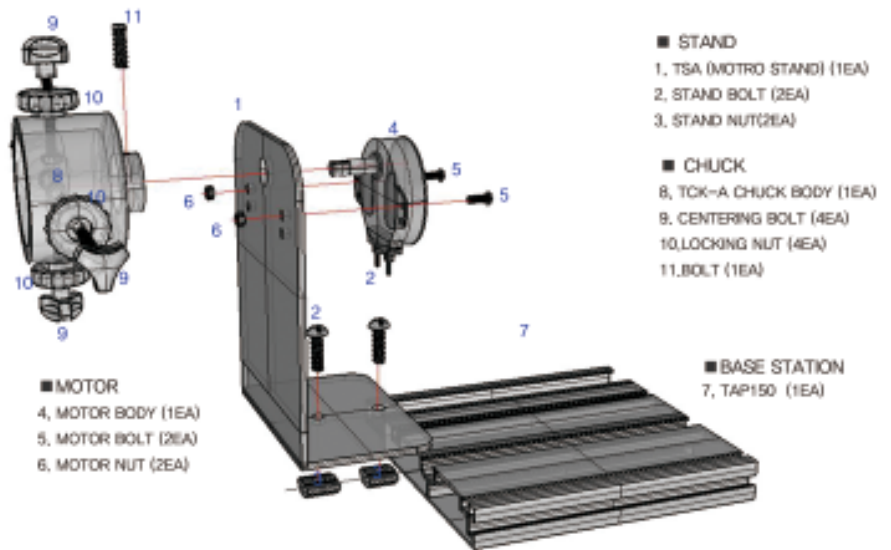
■ MKA : MOTOR STAND KIT
TCK-A (CHUCK) + TAP150(BASE STATION)
+ JSM (MOTOR) + TCORD (CORD)

■ TVS : SUPPORTER
MAIN FRAM + TRL45(ROLLER)-3EA

■ TTA (TENSIONER)
MAIN PLATE + BOLT/NUT/SPRING

■ TAP-800 (BASE STATION)

MKA



■ MOTOR
4, MOTOR BODY (1EA)
5, MOTOR BOLT (2EA)
6, MOTOR NUT (2EA)

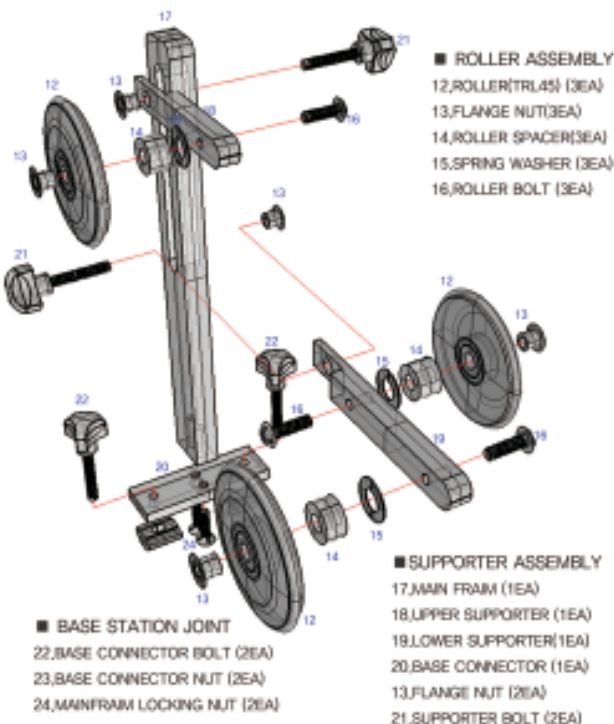
■ STAND
1, TSA (MOTRO STAND) (1EA)
2, STAND BOLT (2EA)
3, STAND NUT(2EA)

■ CHUCK
8, TCK-A CHUCK BODY (1EA)
9, CENTERING BOLT (4EA)
10, LOCKING NUT (4EA)
11, BOLT (1EA)

■ BASE STATION
7, TAP150 (1EA)

■ ON-OFF SWITCH CORD (TCORD) IS NOT SHOWN BUT INCLUDED.

TVS

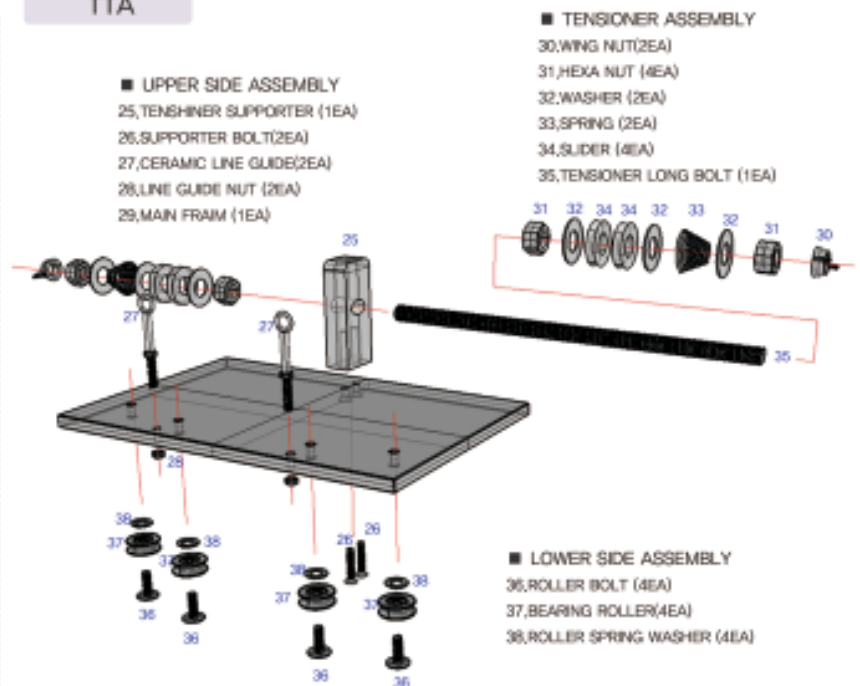


■ ROLLER ASSEMBLY
12, ROLLER(TRL45) (3EA)
13, FLANGE NUT(3EA)
14, ROLLER SPACER(3EA)
15, SPRING WASHER (3EA)
16, ROLLER BOLT (3EA)

■ SUPPORTER ASSEMBLY
17, MAIN FRAM (1EA)
18, UPPER SUPPORTER (1EA)
19, LOWER SUPPORTER(1EA)
21, SUPPORTER BOLT (2EA)

■ BASE STATION JOINT
22, BASE CONNECTOR BOLT (2EA)
23, BASE CONNECTOR NUT (2EA)
24, MAINFRAM LOCKING NUT (2EA)

TTA



■ UPPER SIDE ASSEMBLY
25, TENSHER SUPPORTER (1EA)
26, SUPPORTER BOLT(2EA)
27, CERAMIC LINE GUIDE(2EA)
28, LINE GUIDE NUT (2EA)
29, MAIN FRAM (1EA)

■ TENSIONER ASSEMBLY
30, WING NUT(2EA)
31, HEXA NUT (4EA)
32, WASHER (2EA)
33, SPRING (2EA)
34, SLIDER (4EA)
35, TENSIONER LONG BOLT (1EA)

■ LOWER SIDE ASSEMBLY
36, ROLLER BOLT (4EA)
37, BEARING ROLLER(4EA)
38, ROLLER SPRING WASHER (4EA)

• T-System Components

TAP

Aluminum Base Station

Very light, compatible and connected with all of T-System items. It is a "must-have". You can connect 2 or 3 even it is 800mm or 150mm with TCN Connector.



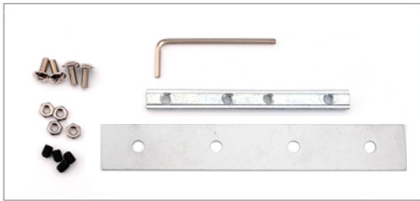
TAP150

MODEL	Type	Length	PRICE
TAP800	Aluminum	800mm	U\$ 32.00
TAP150	Aluminum	150mm	U\$ 8.00

TCN

Station Connector

Accessory for TAP base station to connect all of this TAP series. It is installed in Tensioner rail and Side rail.



MODEL	PRICE
TCN	U\$ 5.00

TCK-A

Simple Chuck

Simple chuck is very easy to install rod or blanks. It covers 5mm to 35mm with adjusting bolt. Locking nut makes rod or blank not to fall down during drying.



MODEL	Type	PRICE
TCK-A	Aluminum	U\$ 20.00

TVS

Jadrak Supporter (TVS)

Space saving Supporter and 3 ball bearing rollers cover the high speed automatic wrapper motor.

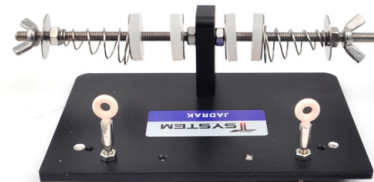


MODEL	Length	PRICE
TVS	45mm	U\$ 32.00

TTA

Jadrak Tensioner (TTA)

It covers big spool not to speak of 100yd small spool. Ceramic line guides prevent hurt of wrapping threads.



MODEL	Length	PRICE
TTA	45mm	U\$ 32.00

JSM18

Dry Motor 220/110V



MODEL	Voltage	PRICE
JSM18-220	220V	U\$ 9.00
JSM18-110	110V	U\$ 9.00

TCORD

Electric Wire w/Switch



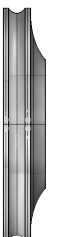
MODEL	Length	PRICE
TCODE	180cm	U\$ 5.0

TLR45

Jadrak B/B Roller (TRL45)



MODEL	Diameter	PRICE
TRL45	45mm	U\$ 5.00



SIDE VIEW

● **T-System Sub-Kit**

MKA

Dry Motor Kit

It is composed of TAP150 base station, TCHK-A chuck, TSA stand and T-Cord.
Stand-alone TAP150 makes it possible to cope with long rods and useful for left-hander also. 110/220V Motor optional.

MODEL	Length	PRICE
MKA-220	220	U\$ 50.00
MKA-110	110	U\$ 50.00



TDR80

Drying System (800mm)

This is just for Drying but TAP150, TTA and TVS can be added to be wrapper.

MODEL	Contents	Q'ty	PRICE
TDR80-220	3cc	220V	U\$100.00
TDR80-110	5cc	110V	U\$100.00



Blank on TDR80 is not included. Just for picturing

TDR15

Drying System (150mm)

This is just for Drying but TAP800, TTA and TVS can be added to be wrapper.

MODEL	Contents	Q'ty	PRICE
TDR15-220	3cc	220V	U\$86.00
TDR15-110	5cc	110V	U\$86.00



Blank on TDR80 is not included. Just for picturing

THWK

Hand Wrapper

This is just for handwrapping. It can be drying system if MKA is added.

MODEL	Contents	Q'ty	PRICE
THWK	3cc	220V	U\$115.00



Epoxy Finish & Accessory

• Epoxy Finishes and Small tools

RPX

Premium Epoxy Finishes

Available in both High and Lite Build Formulas. Use Lite Build for lighter, thinner coats. The 2oz. Kits (F2S and F2SL) include a pair of color-coded syringes. The 24cc Kits (F1K and F1KL) have everything you need to finish 4 average rods with two loaded 12 cc syringes, 4 brushes, 4 mixing cups and 4 mixing sticks. The 4oz. Kit (F4Y and F4YL) includes yorker caps so you can easily pop the cap off and squirt both parts into a mixing cup.

Resin : 40ml / Hardner : 40ml



MODEL	Contents	TYPE	PRICE
RPX-80	80ml	Regular	U\$20.00
RPX-240	240ml	Regular	U\$48.00

EBR60

Bubble Buster

Used for removing air bubbles from table top epoxy. Bubbles are reduced when this evaporated with bubble.



MODEL	Length	PRICE
EBR60	60ml	U\$ 6.00

CFL80

Cork Filler

Pit Paste is a high quality pit filler for cork. It has excellent color matching properties and cleans with soap and water. It's sandable in 30 minutes, unmatched strength and durability, won't pop out over time.



MODEL	Contents	PRICE
CFL80	80ml	U\$ 6.00

XRCK50

Cork Seal (2 oz.)

Cork Seal is designed to seal the surface of cork rod handles. It prevents the penetration of soils and other foreign matter transferred to the grip area from the fisherman's hands. It enhances that "cork feel." It toughens the cork to aid in the prevention of sloughing and chipping of the cork surface.

Cork Seal soaks into the cork and seals in depth. Once it is dry, dirt, grime, salmon egg residue are easily washed off with soap and water.



MODEL	Length	PRICE
XRCK50	50ml	U\$6.00

ST-4

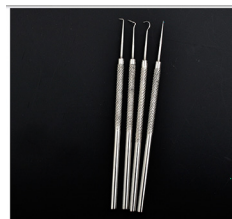
Spatula (one set of four)



MODEL	Q'ty	PRICE
ST-4	One set of four	U\$ 15.00

PT-4

Wrapping deadline tool



MODEL	PRICE
PT-4	U\$ 9.00

RT-01

Thread Tensioner



MODEL	PRICE
RT-01	U\$ 7.00

● **Supplies - Disposable**

RB/DRB

Disposable Finishing Brushes



MODEL	TYPE	Length	PRICE
RB03	RED	5PCS	U\$2.00
RB05	BLACK	5PCS	U\$2.00
DRB03	RED	50 PCS	U\$ 12.00
DRB05	BLACK	50 PCS	U\$ 12.00

MCP20

20ml Mixing Cups (20 pk.)



MODEL	TYPE	Length	PRICE
MCP20	RED	20	U\$2.00

ESRG

Epoxy Mixing Disposal Syringe



MODEL	Contents	Q'ty	PRICE
ESRG3	3cc	5pcs	U\$1.00
ESRG5	5cc	4pcs	U\$1.00

MST50

Mixing Sticks (50 Pack)



MODEL	Description	PRICE
MST50	50 Wood Sticks	U\$ 100

MARKER

Peel-Off China Marker

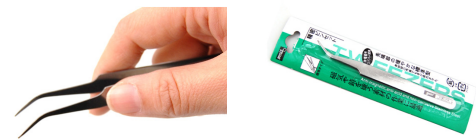


MODEL	PRICE
MARKER	U\$ 1.00

GDP

Godi Simple pincette

It is an entry-level tweezer made of corrosion-resistant stainless steel material.

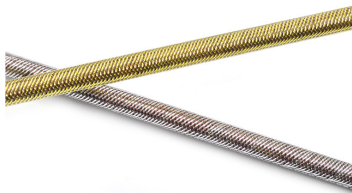


MODEL	Length	PRICE
GDP	12cm	U\$ 1.50

DW-08

Diamond Wrap Wrapping

Gold and silver metal tubes are twisted in tube. You can apply the diamond wrap effect on the Rods quickly and conveniently. After wrapping, epoxy should be finished.



MODEL	COLOR	I.D.(mm)	Length(mm)	PRICE
DW-08/G	Metallic Gold	5.1~13.0mm	39.3" (100cm)	U\$3.00
DW-08/S	Metallic Svlr	5.1~13.0mm	39.3" (100cm)	U\$3.00

SMTAPE

3M Pervasive masking tape

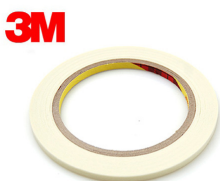
10 yards. Masking tape is commonly used in rod building to make bushings for reel seats in lieu of graphite arbors. Epoxy is well pervasive and make strong bonding possible. Thickness is thin, and it is possible to precisely adjust the gap.



MODEL	Width	Length	PRICE
SMTAPE	13mm	10yds	U\$ 1.5

3MTAPE

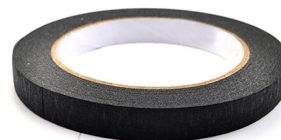
Masking Tape



MODEL	Width	Length	PRICE
3MTAPE5	5mm	50mm	U\$ 1.5
3MTAPE10	10mm	50mm	U\$ 2.0

BMTAPE

Black masking tape



MODEL	Width	Length	PRICE
BMTAPE	12mm	44yds	U\$ 2.5